



Riviera 30 | Cube Facade

Facade images and landscaping may vary from this image

5 | 3 | 2

Lot 82 \$1,576,000

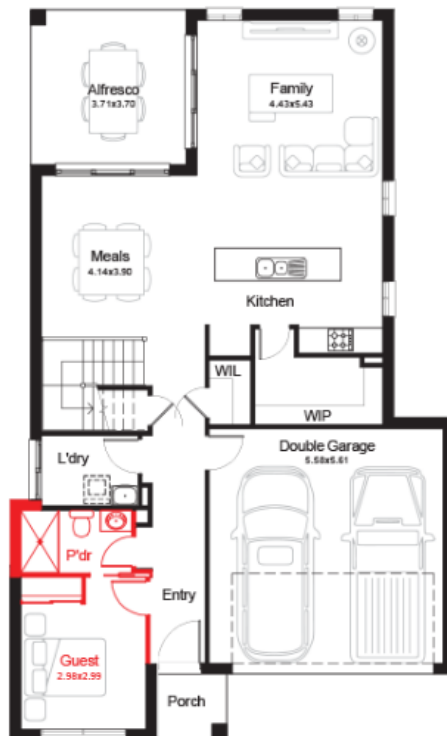
Estimated Land Registration 3rd Quarter 2022

Comfort, Kitchen and Electrical Security Packs Included. **Current Promotion included.** Land Size 569 SQM

This plan may include additional steps, please see a consultant.

PACKAGE INCLUDES

- Quality Tiles & Carpet
- Blinds and Flyscreens to windows
- Insulation to walls and ceiling (excluding garage)
- 900mm Stainless Steel Oven, Cook top and Range hood. Stainless Steel Dishwasher
- 20mm stone bench top to kitchen with Soft close drawers and doors.
- Render to colour trims included
- Down lights to living Areas
- Automatic Garage Doors
- TV Antenna
- Driveway, Landscaping, Site Costs & Fencing
- \$20,000 Off Packages Included
- FIXED PRICE – NO HIDDEN COSTS





House Length	17.39m	Total Area m ²	276.94
House Width	10.56m	Total Area Squares	30