

Land Registration 3rd
Quarter 2022



Aria 26 | Chisholm Facade

Facade images and landscaping may vary from this image

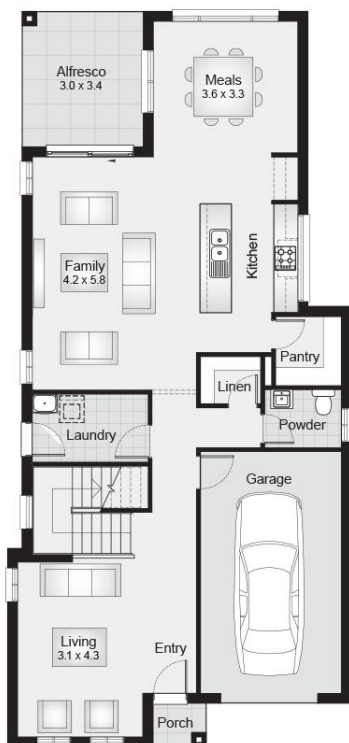
4 | 2.5 | 1

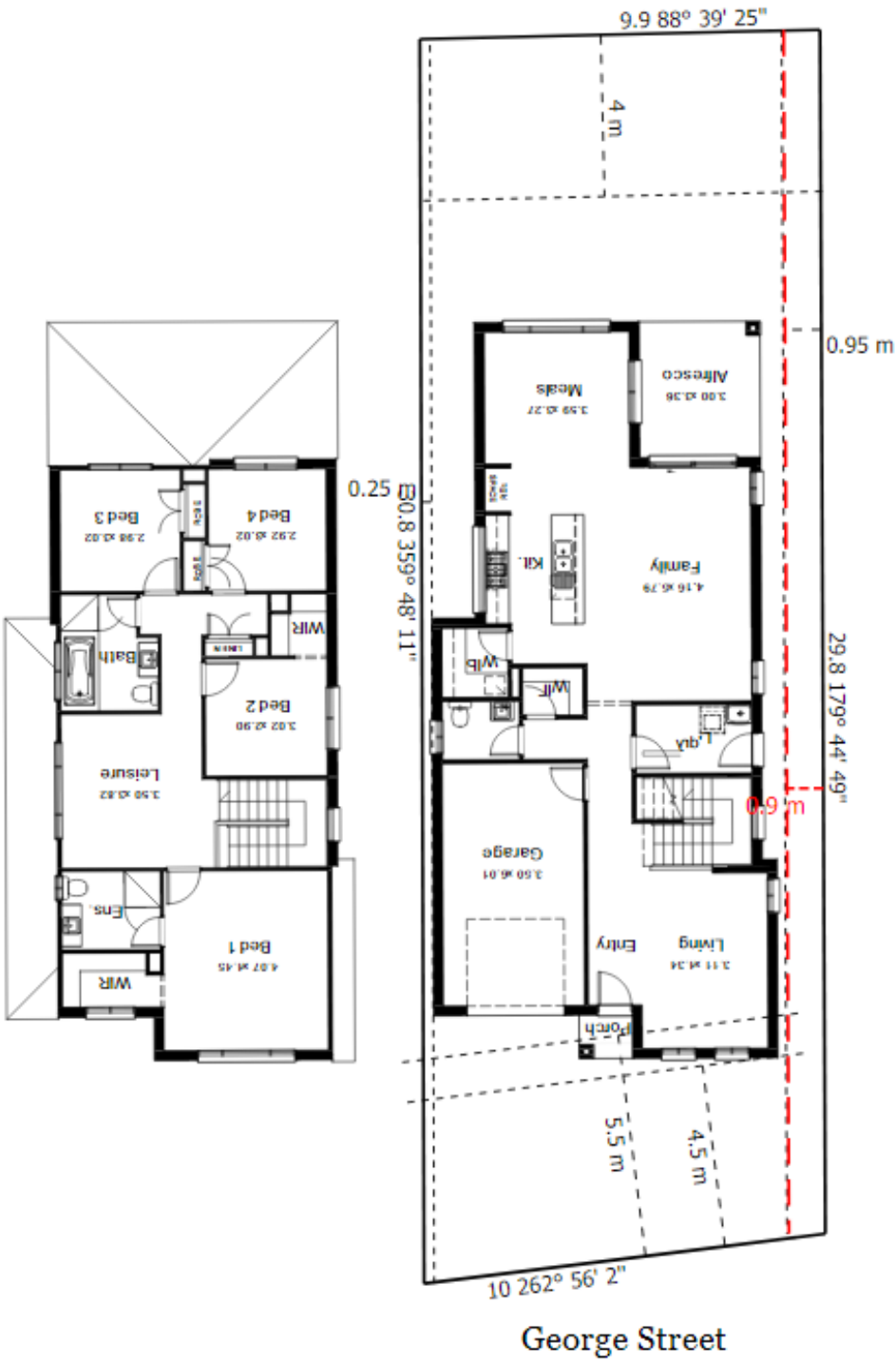
Lot 1002 \$1,333,000

Includes Sapphire Inclusions and
Current Promotion

PACKAGE INCLUDES

- Land Size - 300 SQM
- Driveways, Landscaping, Fencing
- Floor Coverings
- Fully Ducted Air
- 2750mm Ceiling Height to Ground Floor
- Smeg Appliances
- Roller blinds
- Colour Trims to Façade
- 40mm Stone Benchtops with waterfall edge to Kitchen
- Two 600 Wide Ovens
- Auto Garage Door
- Alarm System
- \$30,000 Colour Voucher, Discount Already Applied
- FIXED PRICE





House Length	18.20m	Total Area m ²	238.20
House Width	8.50m	Total Area Squares	26