



Portland 22 | Tempo Facade

Facade images and landscaping may vary from this image

4 | 2.5 | 1

**Lot 1002 \$1,252,000**

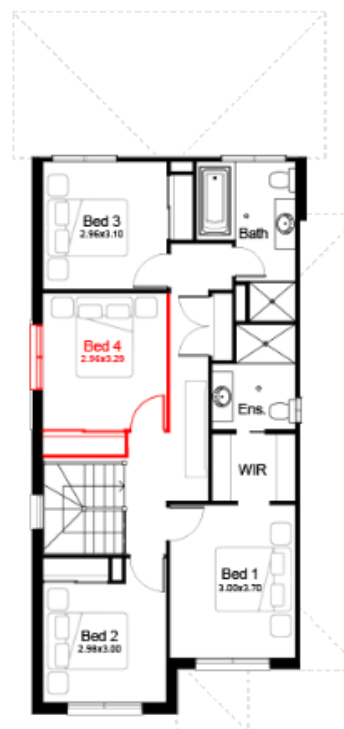
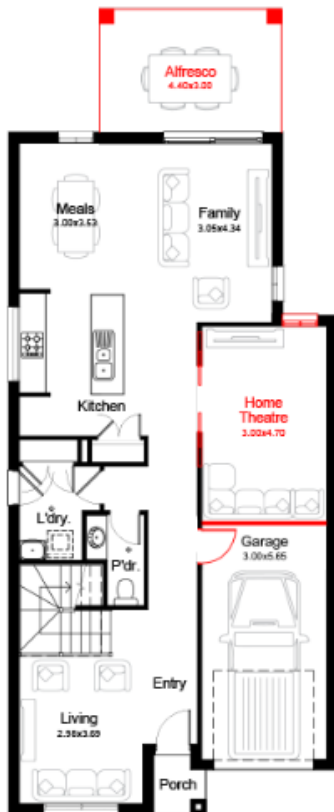
Estimated Land Registration 3<sup>rd</sup> Quarter 2022

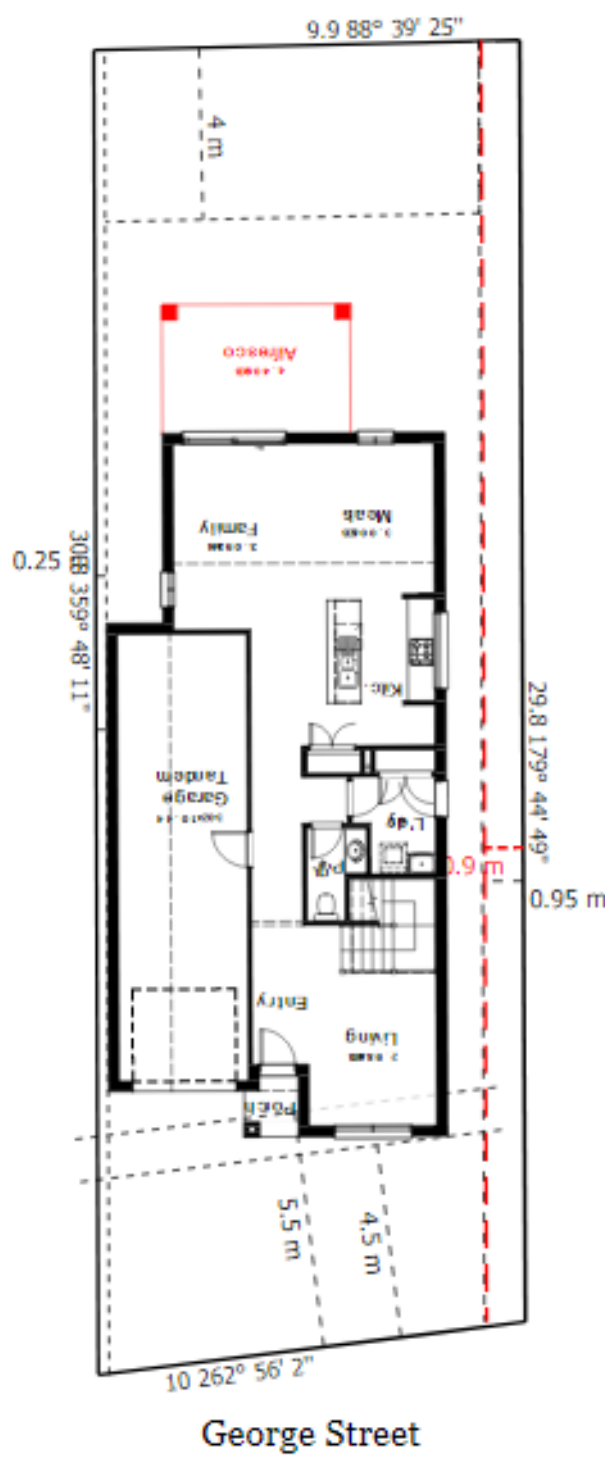
Comfort, Kitchen and Electrical Security Packs Included. **Current Promotion included.** Land Size 300 SQM

This plan may include additional steps, please see a consultant.

## PACKAGE INCLUDES

- Quality Tiles & Carpet
- Blinds and Flyscreens to windows
- Insulation to walls and ceiling (excluding garage)
- 900mm Stainless Steel Oven, Cook top and Range hood. Stainless Steel Dishwasher
- 20mm stone bench top to kitchen with Soft close drawers and doors.
- Render to colour trims included
- Down lights to living Areas
- Automatic Garage Doors
- TV Antenna
- 10% Off House and Land Already Applied
- Driveway, Landscaping, Site Costs & Fencing





George Street

House Length	16.43m	Total Area m <sup>2</sup>	203.84
House Width	7.91m	Total Area Squares	22