



Lyon 19N | Seabreeze Facade

Facade images and landscaping may vary from this image

4 | 1 | 2 | 1

Lot 1003 \$1,125,000
Estimated Land Registration Early 2023

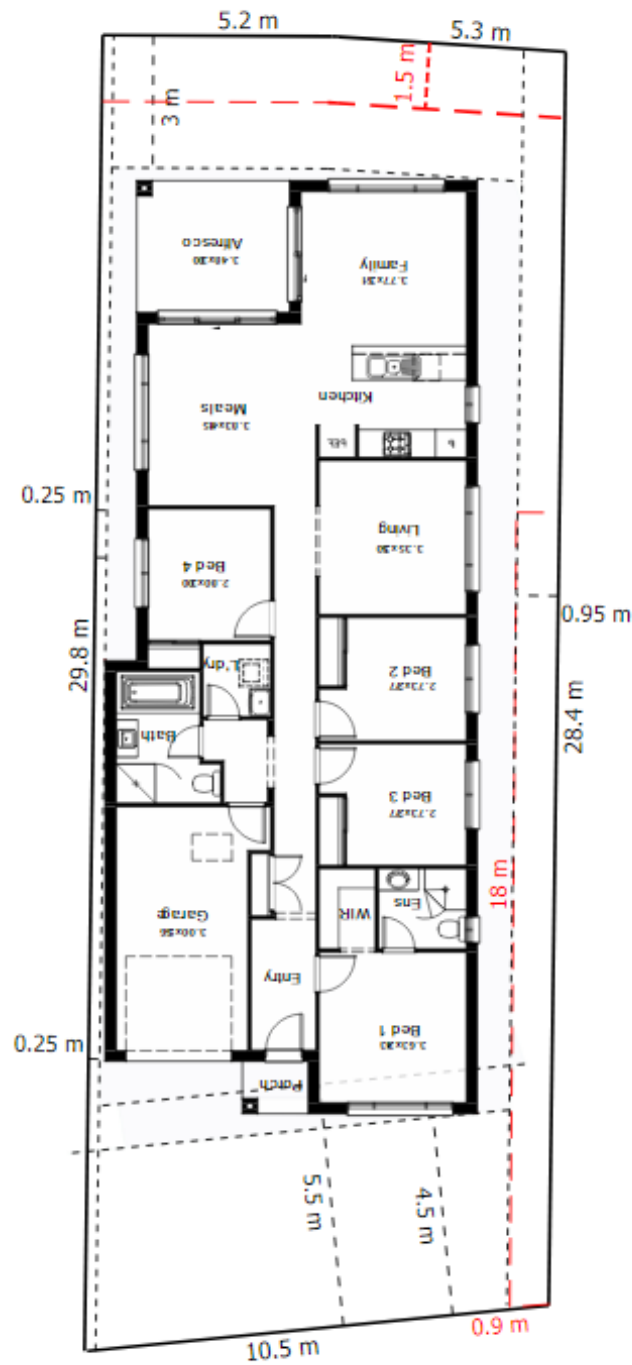
Current Promotion included.
Land Size 305 SQM

This plan may include additional steps, please see a consultant.

PACKAGE INCLUDES

- Quality Tiles & Carpet
- Blinds and Flyscreens to windows
- Insulation to walls and ceiling (excluding garage)
- 900mm Stainless Steel Oven, Cook top and Range hood. Stainless Steel Dishwasher
- 20mm stone bench top to kitchen with Soft close drawers and doors.
- Automatic Garage Doors
- Ducted Air Included
- \$30,000 Off Already Applied
- Driveway, Landscaping, Site Costs & Fencing





George Street

House Length	21.23m	Total Area m ²	176.51
House Width	8.47m	Total Area Squares	19