



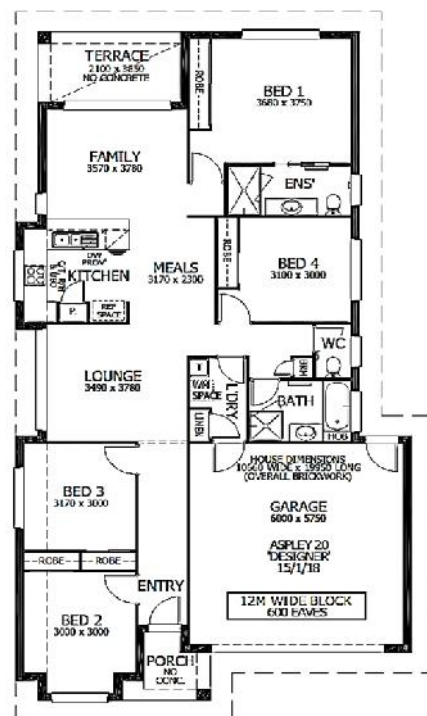
Image may depict upgrades that are not included in the pricing.

Floor area: 182.34m<sup>2</sup> / 19.63sq | Block size: 456m<sup>2</sup>m<sup>2</sup>  
Address: Lot 439 Pastures St, Cumbalum NSW 2478



## Aspley 20 Package Inclusions

- \* Site cost allowance including Council approval
- \* R3 ceiling insulation to living areas
- \* Off white mortar
- \* LED downlights throughout
- \* Instantaneous gas (LPG) hot water system
- \* Remote control unit to garage incl. three (3) handsets
- \* Provision for future fibre optic system
- \* Westinghouse cooktop and oven
- \* Laminated soft close doors to kitchen and vanities
- \* Compliance with BASIX water tank requirements (NSW only)
- \* Kitchen upgrade: Laminated overhead cupboards with plaster board bulkheads to ceiling, dishwasher provision, integrated range hood ducted externally
- \* Floor coverings throughout.
- \* Flyscreens to all windows and sliding doors.
- \* Powder coated wall mounted clothesline and metal letterbox.
- \* TV antenna.
- \* Your choice of exposed aggregate or coloured concrete to driveway, porch and rear covered area.



Covenant Compliance\*

Malcolm Mann 0409 621 009  
malcolm.mann@perryhomes.com.au

\*Disclaimer: Due care has been taken with the siting, design and pricing of the proposed dwelling based upon current information and is correct at time of publication. This however, may change as a result of other influences such as; developer covenants, local, state or federal government requirements etc. Also, undetermined site conditions such as; tree removal, acoustics, bushfire, rock etc. may be excluded unless otherwise specified. Terms and conditions apply to campaigns and special offers. Plans and images are for illustrative purposes only and may depict features such as landscaping, furniture, window furnishings and lighting that are not included in the package price or which are not available from Perry Homes. Land price is correct at time of printing and subject to change without notice. Perry Homes reserve the right to withdraw this package at any time without notice. Perry Homes (Aust) Pty Ltd. QBCC Act Lic. No.718748 NSW Lic No. 110970C28/03/2019 valid until