



Facade image may depict features such as land, landscaping, timber decking, furniture, window treatments and lighting which are not included in the package price or which are not available from Coral Homes.

## \$579,675\*

**BANYAN HILL ESTATE Lot 605 Ballina Heights Drive, Cumbalum**

 **4**
 **2**
 **2**
 **2**

+OUTDOOR

Home Size: 200.13m<sup>2</sup> | Lot Size: 480.00m<sup>2</sup> | 15.99m x 30.03m Lot

## GRANGE 21 ST KILDA

### HOME AND LAND PACKAGE INCLUSIONS:

- ✓ Facade as shown
- ✓ Carpet and tiling
- ✓ Fixed price site works
- ✓ Basix requirements
- ✓ Exposed aggregate driveway and path to entry
- ✓ Integrated slab to outdoor living area
- ✓ Letterbox and turf to the front of home
- ✓ Panelift automatic garage door with 3 remotes
- ✓ myChoice® selection showroom consultation<sup>[^]</sup>
- ✓ Truecore® steel frame and trusses
- ✓ Colorbond® Roof
- ✓ Ceasarstone bench tops to kitchen, bathroom and ensuite
- ✓ Semi-frameless shower screen to bathroom and ensuite
- ✓ Extended tile height to 2100mm on vanity wall to bathroom and ensuite
- ✓ Stained timber feature front entry door
- ✓ Mirror sliding doors to robes
- ✓ Flyscreens
- ✓ NBN lead in

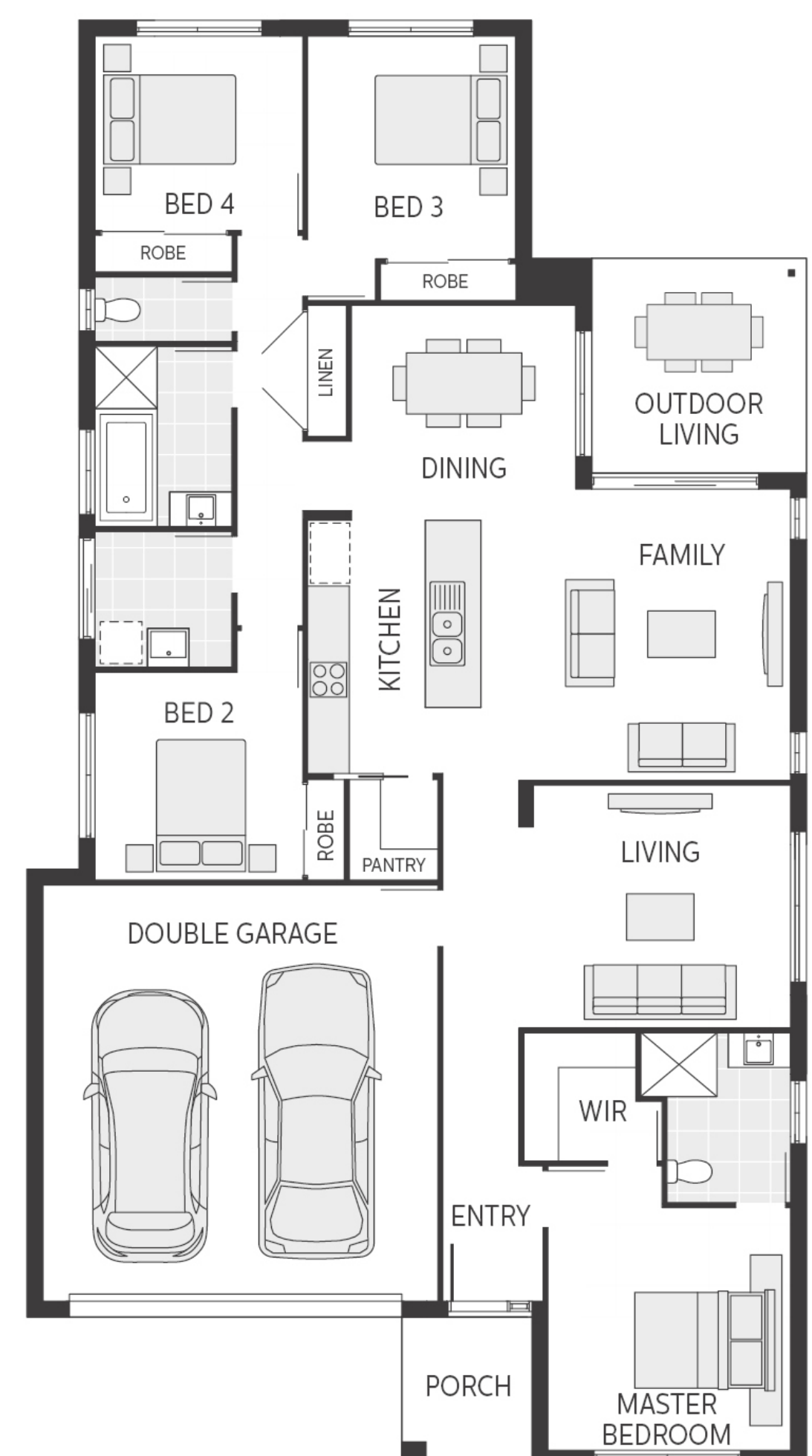
### FOR MORE INFORMATION

**Haley Corrigan | Coral Homes Sales Consultant**

**[h.corrigan@coralhomes.com.au](mailto:h.corrigan@coralhomes.com.au)**

**P: 0409 516 970 | M: 0409 516 970**

**5 Lawrence Rise, Cumbalum, NSW**



Floor plan is indicative only, conceptual in nature and subject to change. Floor plan may depict fixtures, fittings, features, finishes, inclusions, furnishings, vehicles and/or other products which are not included in the house design, not included in the package price and/or not available from Coral Homes<sup>1</sup>.

\*Price shown is based on Coral Homes' 23-12-19 price list. Land price and availability is subject to change at any time and without notice. Land price at the time of printing is \$323,000. Price shown does not include additional amounts payable in respect of variations to the house design requested by the buyer. Pricing based on March 2021 registration. Additional fees might apply if registration delayed. Price excludes bushfire or acoustic upgrade requirements. House siting is to be determined by Coral Homes. Plan is subject to approval by the Principal Developer and Local Authorities. Coral Homes reserves the right to withdraw this package at any time without notice. QBCC 50792/1014053, OFT NSW 62084C, BLD260339