

HOME&LAND



Avery 191
\$438,650

House: \$228,750 | Land: \$209,900

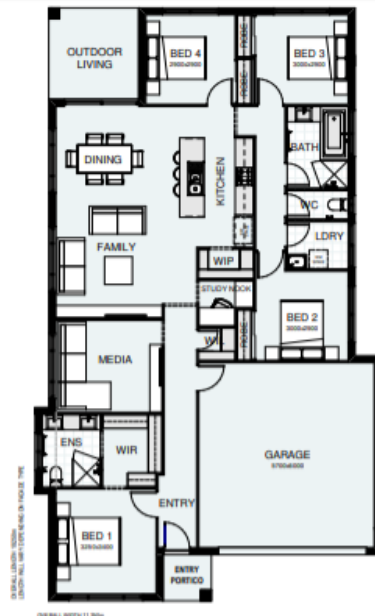
SEQUANA | LOGAN RESERVE | LOT 328 400M2



BOLD
LIVING

HOME INCLUSIONS

- M Class slab Included Plus Piering allowance
- Council Fees Included
- Contemporary Inclusion (See Brochure for Details)
- Fully Ducted Air Conditioning Included
- Choice of Timber Look Laminate Flooring OR 450x450 Tiles to main living Areas and Carpet to Media and Bedrooms
- Caesarstone Benchtops through out, including laundry PLUS 40mm stone to Kitchen Island
- LED downlights
- Coastal Façade Included
- 900mm appliances to Kitchen
- Driveway allowance included
- Personalised selections appointment at Evolve Design Studio – Queensland's largest colour and selections studio
- \$5k DISCOUNT towards your Build Cost – Contact Natalie to find out more



FLOOR AREAS

| | |
|----------------|----------------------|
| LIVING | 143.1 m ² |
| GARAGE | 37.1 m ² |
| OUTDOOR LIVING | 8.7 m ² |
| ENTRY PORTICO | 2.4 m ² |
| TOTAL | 191.3 m ² |

ENTRY PORTICO SHALL BE BUILT TO 1000mm HEIGHT
MIN. BLOCK WIDTH 12.5m
ANY VARY BUILT ALL ALLOWED
DEPENDENT ON SITE TRAIL RECOMMENDATIONS



Australia's No.1 Medium Builder

AVERY 191



CONTACT - Natalie Hill
0411 291 974
n.hill@boldliving.com.au