

# HOME&LAND



## NEWPORT 223 \$471,900

House: \$237,000 | Land: \$234,900

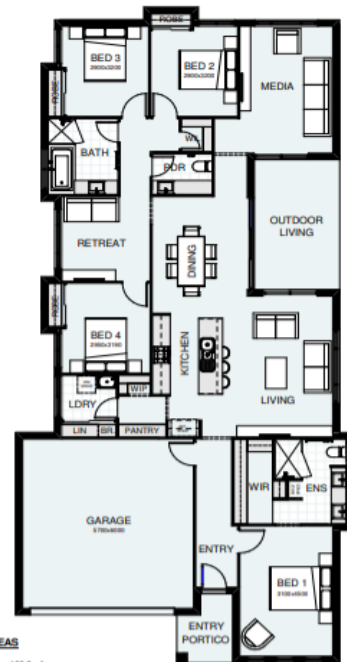
SEQUANA | LOGAN RESERVE | LOT 216 503M2



**BOLD**  
LIVING

### HOME INCLUSIONS

- M Class slab Included Plus Piering allowance
- Council Fees Included
- Contemporary Inclusions (See Brochure for Details)
- Fully Ducted Airconditioning Included
- Choice of Timber Look Laminate Flooring OR 450x450 Tiles to main living areas and Carpet to Media and Bedrooms
- Caesarstone Benchtops through out Including Laundry PLUS 40mm Stone to Kitchen Island Bench
- LED downlights
- 900mm Appliances to Kitchen
- 2590mm Ceiling Height Through Out
- Driveway allowance Included
- Personalised Selections Appointment at Evolve Design Studio



#### FLOOR AREAS

LIVING	188.0 m²
GARAGE	188.0 m²
OUTDOOR LIVING	13.1 m²
ENTRY PORTICO	4.0 m²
TOTAL	223.6 m²

ENTRY PORTICO WALL, SHOWN IN 3D

MIN. BLOCK WIDTH 12.5m

SHOWN NOT TO SCALE ALL MEASUREMENTS TO FACE

NEWPORT 223

**BOLD**  
CREATE YOUR DREAM



Australia's No.1 Medium Builder

CONTACT - Natalie Hill  
0411 291 974  
n.hill@boldliving.com.au