

PIPER 216



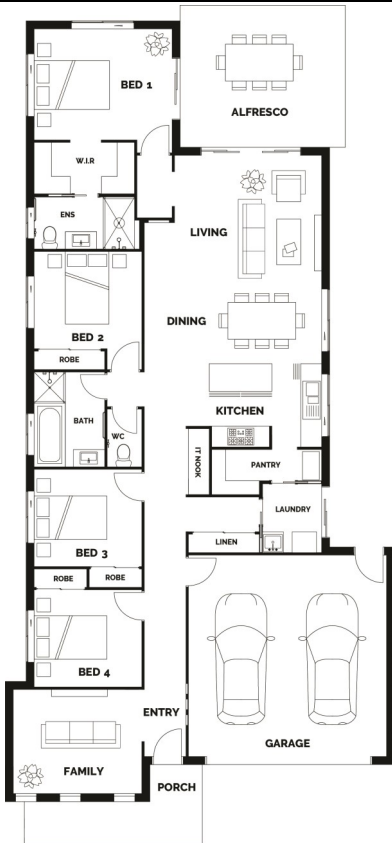
Piper 216 | \$221,434

To Suit 12.5 Wide Lots At Sequana Estate

House Dimensions - 10.80m x 21.72m

Extra required for second street frontage

4 | 2 | 2



House Package Includes:

- All council fees
- Stone Benchtops Throughout
- Stainless Steel Appliances
- LED Downlights Throughout
- Ceiling Fans to all bedrooms
- Exhaust fan / heat lamps to bathrooms
- Carpets & Tiles or Timber Look Vinyl Flooring
- Semi Frameless Shower Screens
- Driveway, Letterbox & Clothesline
- Exposed Aggregate Porch and Alfresco
- Colorbond Roof
- Full NBN Provisions
- Personalised Colour Consultation
- H1 Slab
- Full termite protection
- Landscape allowance (\$2500)

FLOOR AREA

Living	152.66m ²
Garage	36.19m ²
Alfresco	19.43m ²
Porch	8.12m ²
Total	216.40m ²

