



# HOME AND LAND

Images shown are for illustrative purposes only and may not represent the final product such as lighting, window furnishings, timber look garage door & timber windows. Facade details including entry door and window sizing may vary between house types. Pricing also excludes features such as fencing, landscaping, letterbox, decking, driveway and any notable features of the facade. Please speak with your sales consultant for further details.

LOT 3939, MERRIFIELD ESTATE, MICKLEHAM (400M2)

FLOOR PLAN: HUDSON 2212  
FACADE: ARTISAN

**FIXED PRICE**  
**\$570,378**

FIRST HOME OWNERS PRICE \$560,378

3 2 2 2 22sq

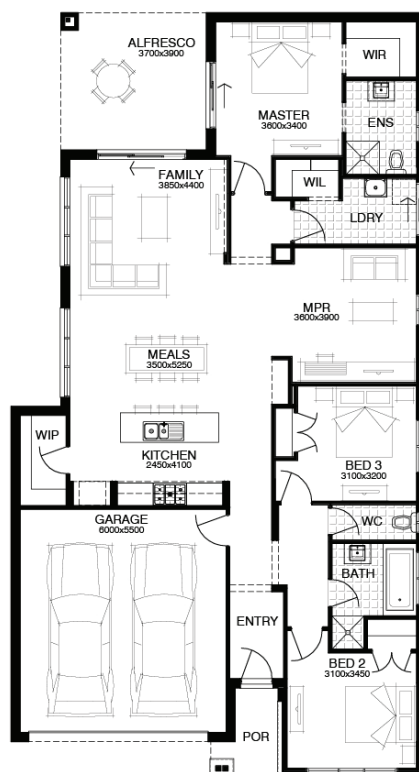
**\$17,000**

OF PROMOTION OPTIONS INCLUDED\*



## PACKAGE INCLUSIONS:

- ▼ WELLNESS - DARWIN ESSENTIALS PACK
- ▼ DEVELOPER & COUNCIL REQS
- ▼ UP TO 40M2 OF 100MM COLOURED THROUGH CONCRETE
- ▼ SECTIONAL LIFT GARAGE DOOR WITH REMOTE
- ▼ 3 COAT PAINT APPLICATION
- ▼ BRICK INFILLS ABOVE WINDOWS
- ▼ UP TO 100M2 (SINGLE STOREY) CAT 1 OR 180M2 (DOUBLE STOREY) CAT 2 CARPET & 50M2 TIMBER FLOORING LAMINATE
- ▼ TECHNIKA 900MM STAINLESS STEEL APPLIANCES



**For enquiries please contact:**

Chandra Deep  
0411 078 424  
Simonds.com.au

Metro North

VIC  
chandra.deep@simonds.com.au

**merrifield**  
LIVING