



Price excludes: Fencing, Landscaping, Concrete pavers, Planter boxes, Decking

FIXED PRICE

## \$559,880\*

LOT 6608 SALISBURY  
TERRACE  
MERRIFIELD ESTATE  
MICKLEHAM

BARTON 22  
CHATEAU FACADE

BLOCK SIZE | 392M<sup>2</sup>



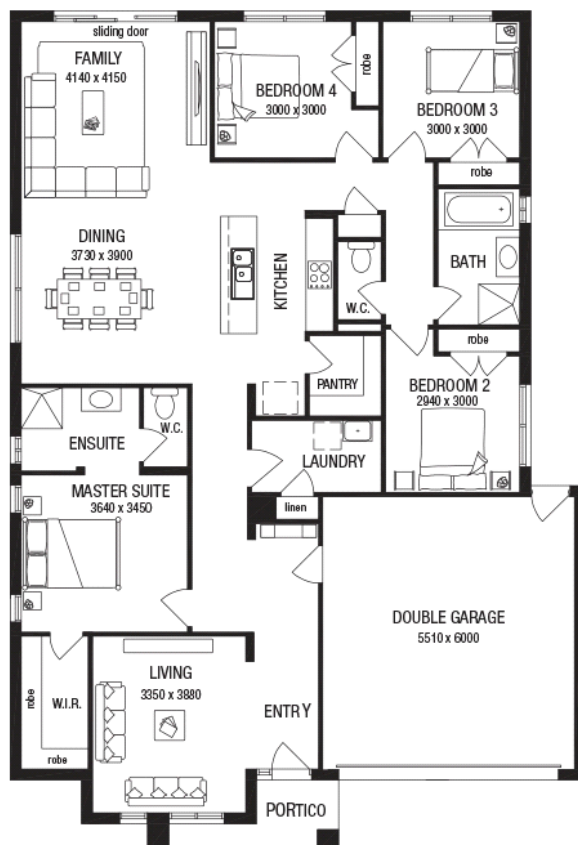
4



2



2



### FIXED PRICE PACKAGE INCLUDES:

THE BARTON 22 WITH CHATEAU FACADE BUILT TO OUR INDUSTRY LEADING BASE SPECIFICATIONS AND LAND, PLUS:

- ✓ Fixed Site Costs - no hidden extras
- ✓ Stylish floor coverings throughout the home
- ✓ Stainless steel appliances
- ✓ Ducted heating
- ✓ Cabinetry throughout
- ✓ Remote control garage
- ✓ Developer guidelines & requirements included
- ✓ BAL 12.5 certified (where required)
- ✓ Build with Australia's #1 & Most Trusted Builder
- ✓ Lifetime structural guarantee#



**Easy &  
Affordable.**

**1300 METRICON**  
www.metricon.com.au

BUILD WITH CONFIDENCE

**LIFETIME**  
STRUCTURAL GUARANTEE

homesolution

**m**  
metricon

\*Packages correct at time of printing and subject to change without notice. ^Package includes timber laminate, two strip floating floor. †Luxury carpet is 100% Nylon plush pile carpet. Package price excludes external lighting, telephone service, customer account opening fees, stamp duty on land, legal fees and conveyancing costs including titles and property report. Home Solution reserves the right to alter the images or descriptions in this flyer without notice. See your HomeSolution consultant for full details of standard inclusions. Land supplied by developer. Land prices and availability are subject to change without notice. All home & land packages are subject to developer approval. Newfield Real Estate Pty Ltd ACN 159 312 722, Licence number 028051L. VIC Builder's Licence: CDB-U 52967 #For details on our Lifetime structural guarantee visit metricon.com.au/terms/structuralguarantee. Package Printed Date: 14/04/2020 Price Region: Greenfields