

TURN-KEY FIXED PRICE PACKAGE



Kingston 30 (Spencer Facade)

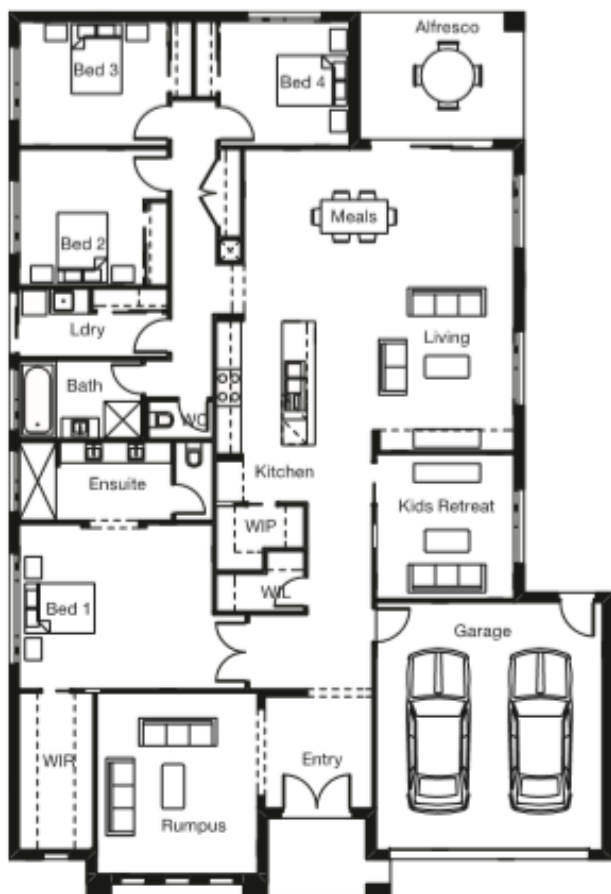
4 Bed | 2 Bath | 2 Car

\$682,000

MINUS \$35,000 FOR FIRST HOME BUYERS IF ELIGIBLE.

**Lot 6641 (621m2) Rosehill Blvd,
Mickleham. (Merrifield Estate)**

- Fixed Site Costs
- Flooring throughout
- Stone Benchtops
- LED Downlights
- 2590mm ceilings
- Blinds to all windows
- Letterbox & Clothesline
- 900mm stainless steel appliances
- Evaporative Cooling
- Concrete Driveway
- Alarm System



SUE WILSON
PROPERTY

Contact Cheryl Jennings
0480 259 981



*Prices correct at time of printing. House & land sold separately. Package price based on standard home & facade. Facade image shown supplied by builder & may not represent builders' standard specifications or inclusions. House details, floorplan and inclusions provided by the builder. All engineering is preliminary & subject to change without notice. Builder partners reserve the right to change prices &/or terms of the package without notice. ©