

## HOUSE & LAND PACKAGE

- Style and functionality
- Extensive range of luxury standard inclusions

**merrifield**

The Bridgewater Range  
**Pricing  
Roll Back**



### Clovelly 191

4 2 2 12.5m

bridgewater 

Lot: 6819 Vautier Avenue, Mickleham

Estate: Merrifield

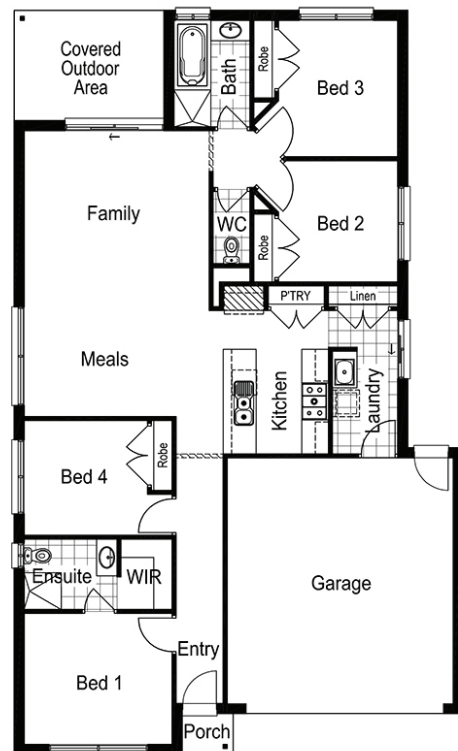
Block size: 350m<sup>2</sup>

Title Exp: January 2021

House Size: 19.14sq

#### Package Includes:

- Tiles and Carpet throughout
- Developers Guidelines
- Fixed Site Costs
- Colorbond® roof
- 900mm freestanding oven
- 900mm Stainless Steel Canopy Rangehood
- Overhead Cabinets to the Kitchen
- Soft Close hinged doors and drawers
- Ducted Heating
- 6-star energy rating on BEST orientation



[www.fairhavenhomes.com.au](http://www.fairhavenhomes.com.au)

**Boston Facey-Smith**  
t: 0497084244

e: [bfaceysmith@fairhavenhomes.com.au](mailto:bfaceysmith@fairhavenhomes.com.au)

**Internal**  
12 Wheeler Street  
BERWICK, VIC 3806