

TURN-KEY FIXED PRICE PACKAGE



Cameron 16 (Collins Facade)

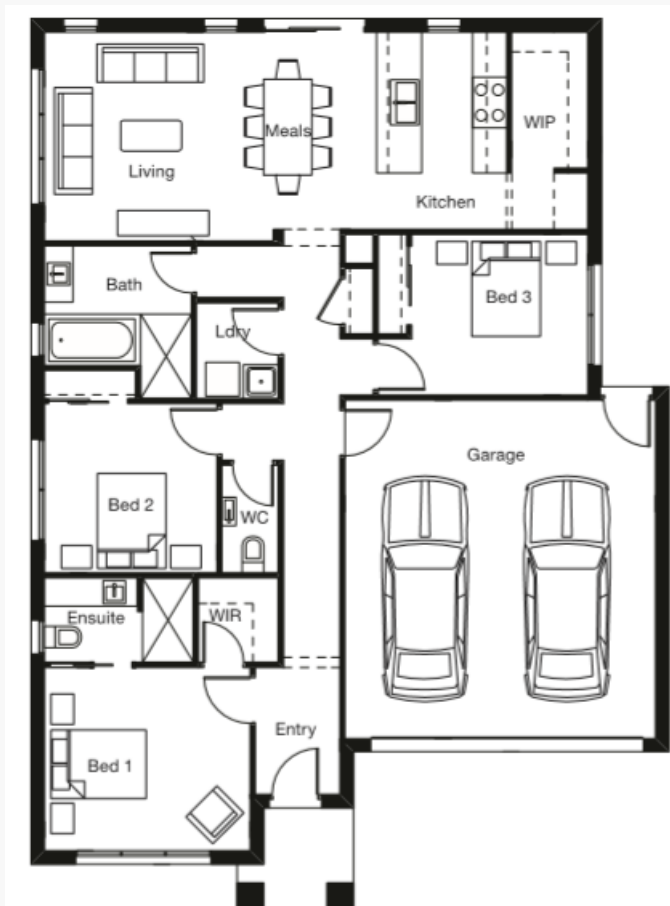
3 Bed | 2 Bath | 1 Car

\$469,000

MINUS - \$35,000 FOR FIRST HOME BUYERS IF ELIGIBLE

**LOT 6713 (263M2)
HARDING STREET, MICKLEHAM
(MERRIFIELD ESTATE)**

- Fixed Site Costs
- Flooring throughout
- Stone Benchtops
- LED Downlights
- 2590mm ceilings
- Blinds to all windows
- Letterbox & Clothesline
- 900mm stainless steel appliances
- Evaporative Cooling
- Concrete driveway
- Alarm System



SUE WILSON
PROPERTY

Contact Cheryl Jennings
0480 259 981



*Prices correct at time of printing. House & land sold separately. Package price based on standard home & facade. Facade image shown supplied by builder & may not represent builders' standard specifications or inclusions. House details, floorplan and inclusions provided by the builder. All engineering is preliminary & subject to change without notice. Builder partners reserve the right to change prices &/or terms of the package without notice. ©