



FIXED PRICE  
**\$563,700\***

Images for illustrative purposes only & may depict upgrade options available at additional charges such as lighting, window furnishings, timber look garage door & timber windows. Pricing also excludes features not supplied by Carlisle, inc fencing, landscaping, letterbox, decking & driveway. Facade details inc entry door, window sizes & placements may vary between house types & sizes. Refer to working drawings for specific locations and sizes.

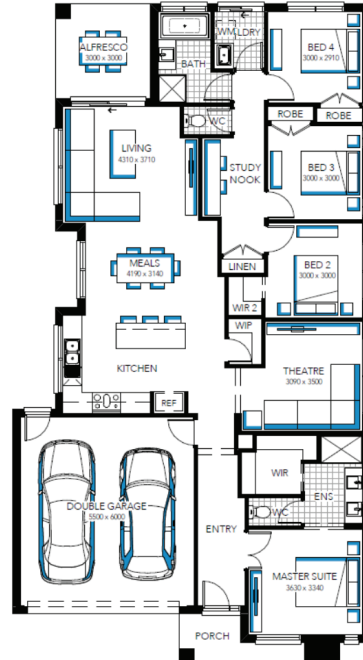
*Life's better*  
**when it's included\*\***

## Portland 23 Mk2

Lot 6819 (350m<sup>2</sup>) Merrifield, MICKLEHAM



- ✓ FIXED PRICE SITE COSTS AND CONNECTIONS
- ✓ DEVELOPER AND COUNCIL REQUIREMENTS
- ✓ DOUBLE GLAZING TO WINDOWS
- ✓ BRIVIS EVAPORATION COOLING
- ✓ CERAMIC TILES OR LAMINATE TIMBER AND CARPET
- ✓ 20MM CAESARSTONE BENCHTOPS TO KITCHEN, ENSUITE & BATHROOM
- ✓ 40MM CAESARSTONE EDGE WITH END PANELS TO ISLAND BENCH IN DOUBLE STOREY HOMES
- ✓ CLEAR GLASS SPLASH BACK
- ✓ TECHNIKA STAINLESS STEEL DISHWASHER
- ✓ 2110MM HIGH ALUMINIUM ENTERTAINER STACKER DOOR AND/OR ADDITIONAL ALUMINIUM SLIDING DOOR TO ALFRESCO
- ✓ ALARM SYSTEM WITH MOTION DETECTORS
- ✓ REMOTE CONTROLLED GARAGE DOOR WITH THREE TRANSMITTERS
- ✓ COLORCOTE METAL ROOF TO SINGLE STOREY HOMES



### FOR ENQUIRIES CONTACT:

Customer Enquiry Team m: 13 27 67 | w: carlislehomes.com.au  
Or visit: North, ,