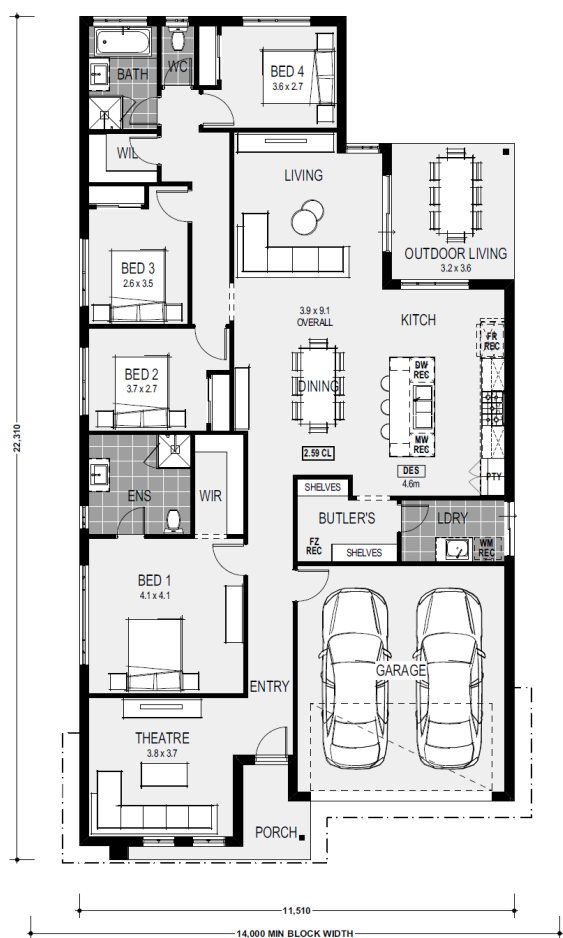




House Plan:



LOT #4336

Merrifield

Address: Gladstone Street, Mickleham, 3064



392 m²

Oxford 25 - Designer

Package Price From

4 2 2 25 sq

\$594,990*

About package:

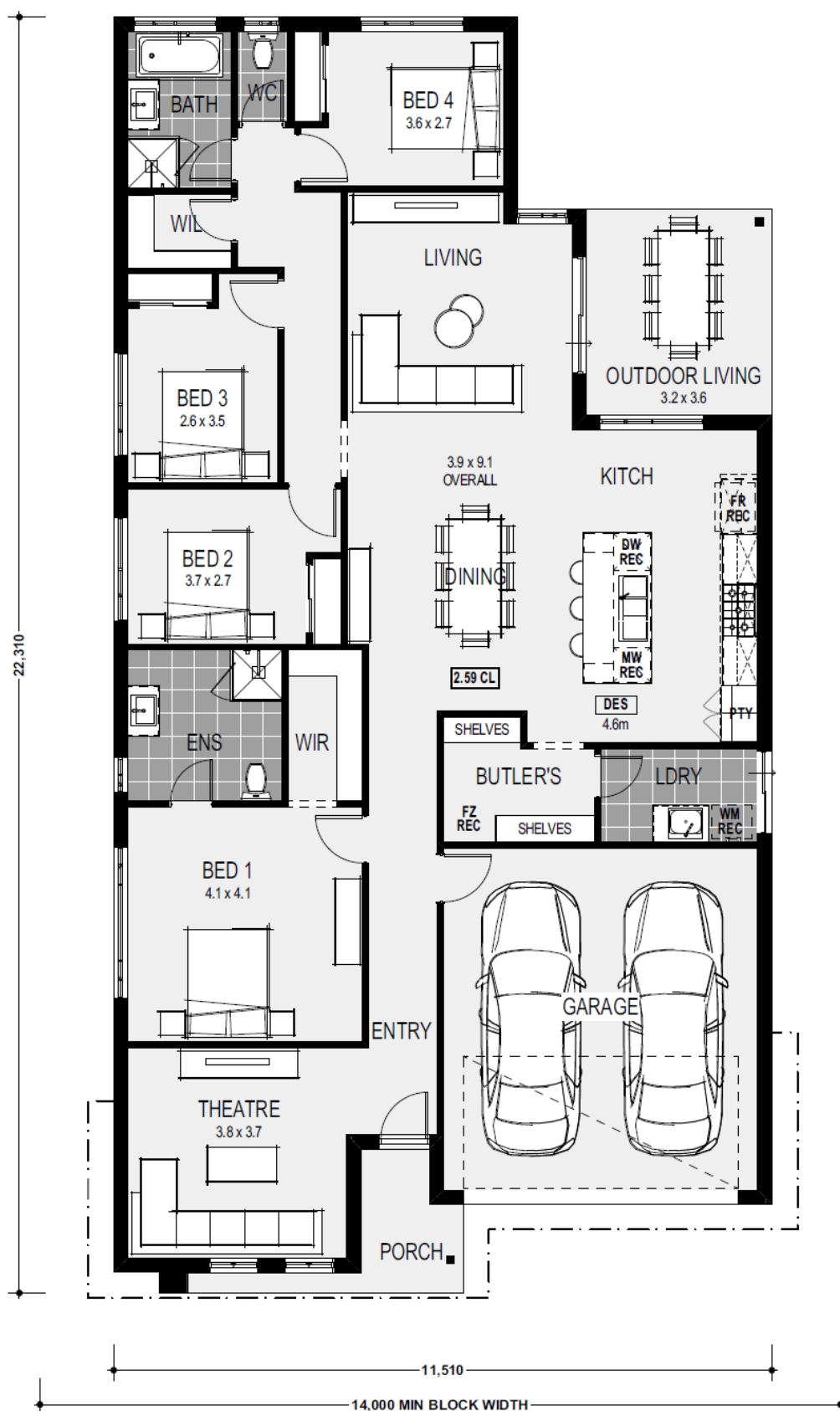
- Including our \$30,000 DESIGNER KITCHEN:
- Huge 1200mm Wide Island Bench with breakfast bar
 - Stone Benchtops
 - European High Gloss Cabinetry
 - European High Gloss Pantry
 - Lift up overhead Cupboards
 - Extensive Drawers
 - 900mm Freestanding Stove
 - Integrated Rangehood
 - Microwave recess with pot drawer
 - Dishwasher recess
 - Integrated cutlery drawer
- PLUS MUCH MORE:
- 2590mm High Ceilings
 - Laminate Flooring OR 450x450mm Main Floor Tiles
 - Carpet
 - LED Downlights throughout
 - Internal Wall Painting
 - Stone Benchtop to Ensuite, Bathroom & Laundry
 - Mirrored Robe Sliding Doors
 - Ducted Heating
 - European Style Fixtures & Fittings throughout
 - Siteworks, Council & Developer Allowance

ENQUIRE NOW:

Jennie Brook • P: 0424685804 • E: Jennie.Brook@homegroup.com.au

Estate Features:

- ✓ Craigieburn Secondary College
- ✓ Craigieburn Central Shopping Centre
- ✓ Craigieburn Train Station
- ✓ Kool Kidz Childcare
- ✓ Broadmeadows Hospital



ENQUIRE NOW:

Jennie Brook • P: 0424685804 • E: Jennie.Brook@homegroup.com.au