



**dennis
family
homes**

a family building
homes for families™



HOUSE & LAND

\$663,647*

MERRIFIELD – MICKLEHAM

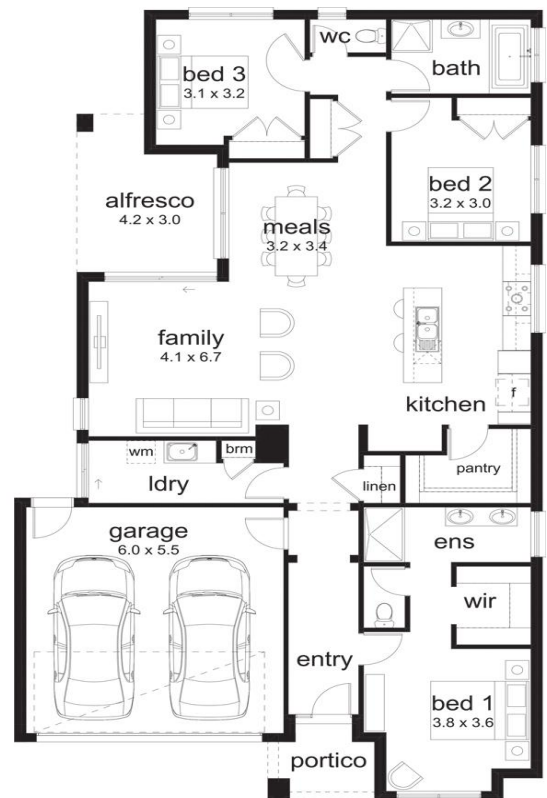
Lot 4956 Beaconsfield Drive
Mickleham VIC 3064

3 2 2 1 1

Cobden 223 Vogue Façade
(Inspirations Essence)

Home size: 22.24sq Land size: 350.00m²

- ✓ Inspirations Essence Inclusions
- ✓ BAL 12.5 inclusions
- ✓ Site Costs Allowance
- ✓ Water Tank
- ✓ NBN/Opticomm/Redtrain/Multinet/CNT Corp. connection
- ✓ 2580mm ceiling height to ground floor
- ✓ Double Garage
- ✓ Sectional Garage Door
- ✓ Flyscreens
- ✓ Stainless Steel Appliances
- ✓ Technika dishwasher
- ✓ Gas ducted heating
- ✓ TV Antenna
- ✓ Floor Coverings
- ✓ Window Furnishings
- ✓ Current Promotion
- ✓ 20mm Caesarstone benchtops to kitchen
- ✓ 35m² of colour-on concrete to driveway and portico
- ✓ Feature Render
- ✓ Brick Infill to Garage
- ✓ Slimline profile roof tiles



merrifield
OUR KIND OF CITY

Go to dennisfamily.com.au or call
1800 DENNIS for more information.

Rosaria Carrabba 0439 049 842

Reference HL0040415

*Subject to land and build contracts for specified lot, available until sold. 1. Images not to scale and may differ from final built forms. 2. Landscaping, driveway, retaining walls, paving, decking, fencing, decorator items and furnishings not included. 3. Unless stated, site costs are not fixed, package price may increase depending on: rock removal and services connection costs, retaining walls, tree root mitigation, developer requirements, BAL zoning and other statutory requirements. 4. "Fixed site costs" packages include rock removal and services connection only, exclude retaining walls and tree root mitigation. 5. Price based on facade shown, excludes stamp duty, legal and transaction costs eg FIRB, finance fees. 6. Customers required to enter into a separate land contract with the land developer. 7. Prospective buyers should make and rely on their own enquiries and seek independent legal and financial advice. 8. Package not available in conjunction with any other promotions. © 2019. Dennis Family Homes Pty Ltd ACN 056254249 is a registered building practitioner CDB-U 49195 (Vic) and 173511C (NSW).