

FIXED PRICE

House & Land Package


SIMONDS



merrifield
Buy. Build. Get.
\$25k*

* Terms and conditions apply

\$5k OFF
Simonds
Titled House & Land at Merrifield

*Already taken off advertised price
For L&C's apply

FIXED PRICE
GUARANTEE

60K
worth of inclusions
at no extra cost

STRUCTURAL
LIFETIME
GUARANTEE

HERBERTON 25_233 | SIMONDS RANGE

\$792,534*

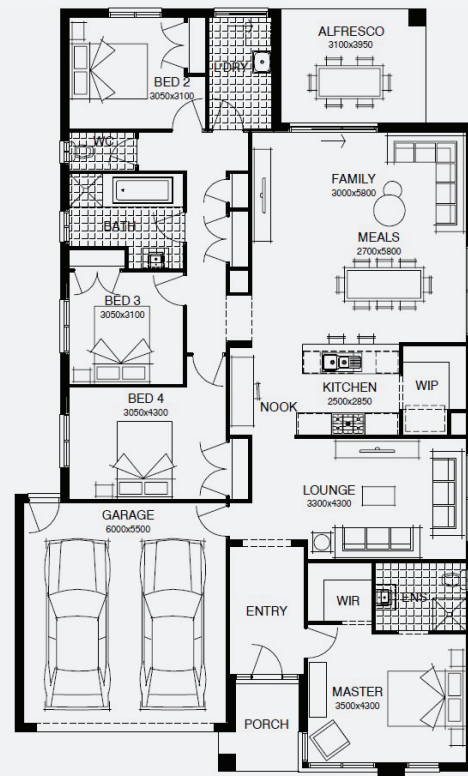
FIRST HOME OWNERS -

INCLUSIONS

- + Fixed price site costs
- + Floor coverings to entire house
- + Coloured concrete driveway & path
- + Euro stainless steel cooktop & oven
- + Tiled skirting to bathrooms
- + Ducted heating
- + R2.5 insulations batts to ceiling & sisalation to walls
- + Estate covenants & so much more!

Lot 5023, Mickleham
Merrifield Estate (448m²)


4 2 2 2



merrifield

For enquiries please contact: **Chandra Deep - 0411 078 424**

simonds.com.au

Images shown are for illustrative purposes only and may not represent the final product such as lighting, window furnishings, timber look garage door & timber windows. Façade details including entry door and window sizing may vary between house types. Pricing also excludes features such as fencing, landscaping, letterbox, decking, driveway and any notable features of the façade. Please speak with your sales consultant for further details. All Fixed Price Home and Land packages are subject to Developer and Council approval and is based on Simonds standard floor plan with preferred siting (without alterations). Package Price does not include stamp duty, government, legal or bank charges. Community Infrastructure Levy and Asset Protection Permit are not included in pricing and is to be arranged by the client directly with the Developer (if applicable). Any alterations may incur additional charges. Confirm land price and availability prior to purchase. Simonds reserves the right to withdraw or amend pricing, inclusions and promotion at any time without notice. Please refer to the terms and conditions at www.simonds.com.au/terms-and-conditions. This package applies to VIC Range range only. Please speak with your sales consultant for further details. Pricing is current at 07/03/2024.

