

HOUSE & LAND PACKAGE

Price starts from
\$638,700

**\$30k
Rebate
Offer till
August**

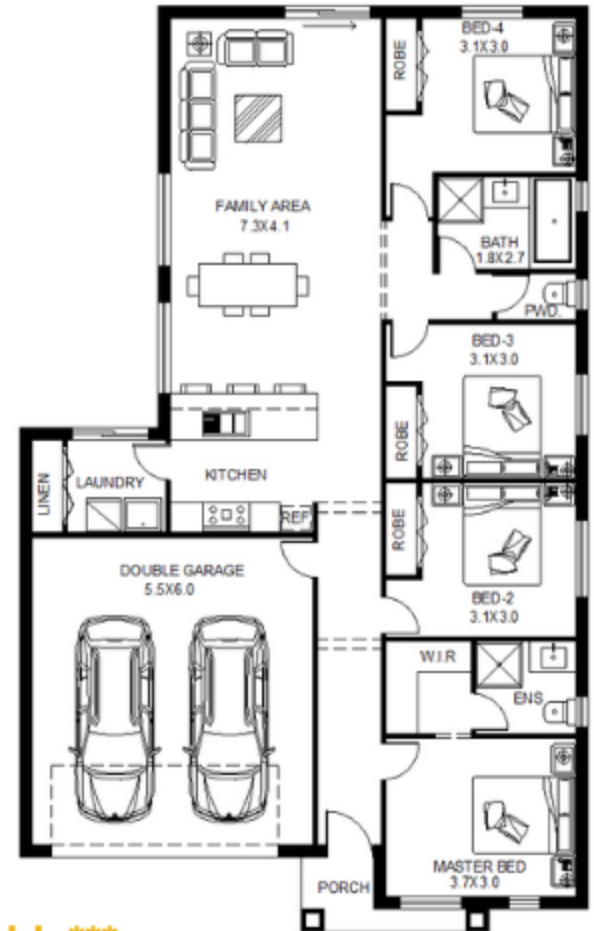
land Size:
350m²

Build Size:
18.2 sq



Lot 4623 TREMAINE AVENUE, Mickleham, Vic 3064
(Titled Land)

- Ducted Heating System
- 900 MM Kitchen Appliances
- 12mm Laminate in open areas
- Tiles in Wet Areas
- Quality Carpet in Bedrooms
- 20mm Stone Benchtop in Kitchen
- Selected Garage Door
- 2550mm high ceiling.
- Built in Robes & Linen
- Professional Colour Consultation.
- 7 Years Structural Warranty
- 3 Months Maintenance Period
- Energy Rating Report
- Council & Developers Approval



*****More Upgrades Available*****

GET THE BEST HOUSE AND LAND DEALS FOR YOUR DREAM HOUSE WITH HONEYCOMB

CONTACT NOW:

- ☎ 0499 310 044
- 🌐 www.honeycombhomes.com.au
- ✉ info@honeycombhomes.com.au
- 📍 5 Flockhart St Mickleham VIC 3064

HOMES

HONEYCOMB
HOMES

merrifield 10 YEARS

Terms & Conditions Apply

The price is based on the home type and floor plan shown, as well as the builder's preferred siting. Pricing is determined by developer-supplied engineering plans and plans of subdivision. Final pricing may vary if actual site conditions differ from those shown in the developer-supplied documents. Block and building dimensions may vary from the illustration and the details shown.

For more information on the pricing and specifications of this home, please contact Honey Comb Homes' exclusive sales team. The price does not include transfer duty, settlement costs, community infrastructure levies imposed, or any other fees or disbursements associated with the settlement of the land.