



Embark
UPGRADES
— Plus —
FLOORING INCLUDED

HOME AND LAND

Images shown are for illustrative purposes only and may not represent the final product such as lighting, window furnishings, timber look garage door & timber windows. Façade details including entry door and window sizing may vary between house types. Pricing also excludes features such as fencing, landscaping, letterbox, decking, driveway and any notable features of the façade. Please speak with your sales consultant for further details.

LOT 209, REDSTONE ESTATE, SUNBURY (448M2)

FLOOR PLAN: BAW 28_264
FACADE: KEPPEL

FIXED PRICE

\$607,064

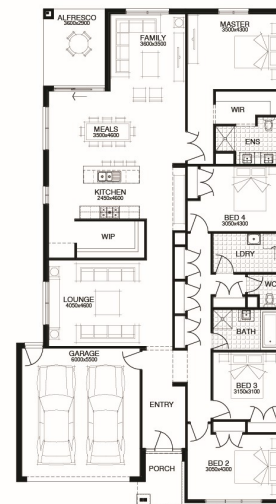
FIRST HOME OWNERS PRICE \$597,064

4 🚗 2 🏠 2 🚗 2 🏠 28sq 📏



PACKAGE INCLUSIONS:

- ▼ DEVELOPER & COUNCIL REQs
- ▼ FLOORING THROUGHOUT
- ▼ 20MM CAESARSTONE BENCHTOP TO KITCHEN
- ▼ OVERHEAD CUPBOARDS TO KITCHEN
- ▼ 20 DOWNLIGHTS
- ▼ BRICKWORK OVER WINDOWS
- ▼ COLOURED CONCRETE DRIVEWAY UP TO 40M2
- ▼ REMOTE TO GARAGE DOOR
- ▼ NBN PROVISIONS (EXCLUDES HUB)
- ▼ TOWEL RAILS & TOILET ROLL HOLDERS



For enquiries please contact:

Stephen Gochman
0408 802 121
Simonds.com.au

Metro North

VIC
stephen.gochman@simonds.com.au

Redstone.
Your world awaits