

easy
LIVING

**BETTER
PACKAGE
DEALS**

✓ FIXED PRICE ✓ EXPERT ADVICE ✓ BEST LOCATION

Only
\$2K
DEPOSIT^{AA}
UNTIL SLAB STAGE

fixed price
\$608,600*

first home owners \$598,600[^]

Images for illustrative purposes only & may depict upgrade options available at additional charges such as lighting, window furnishings, timber look gate, door & timber windows. Pricing also excludes features not supplied by Carlisle, inc. fencing, landscaping, letterbox, decking & driveway. Facade details inc. entry door, window sizes & placements may vary between house types & sizes. Refer to working drawings for specific locations and sizes.

**why
rent?**

first home owners
buy from
\$298 PER WEEK[#]

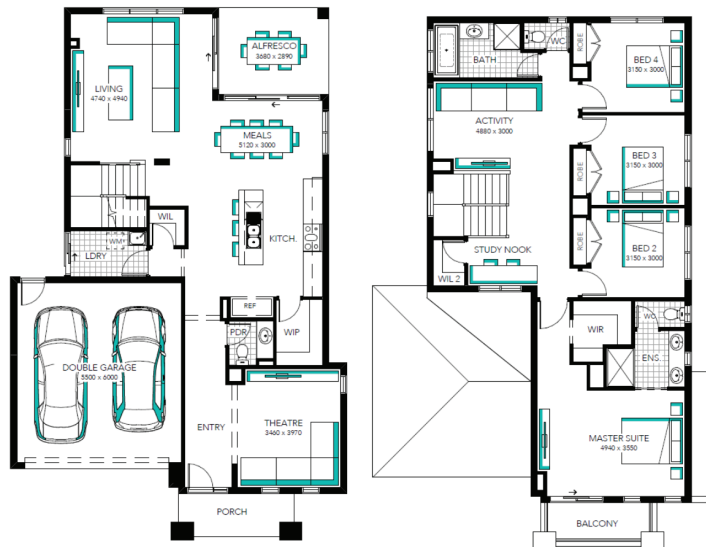
Highview 30



Lot 425 (350m²) Redstone, SUNBURY

EasyLiving Inclusions^{##}:

- ✓ FIXED PRICE SITE COSTS AND CONNECTIONS
- ✓ DEVELOPER AND COUNCIL REQUIREMENTS
- ✓ ONLY 2K DEPOSIT UNTIL SLAB STAGE^{^^}
- ✓ FLOORING THROUGHOUT
- ✓ 20MM CAESARSTONE BENCHTOP WITH 16MM SHADOWLINE TO KITCHEN
- ✓ GLASS SPLASH BACK TO KITCHEN
- ✓ STAINLESS STEEL DISHWASHER
- ✓ LAMINATE LAUNDRY CABINETRY AND STAINLESS STEEL TROUGH
- ✓ WHITE LED DOWNLIGHTS TO ENTRY AND LIVING AREAS
- ✓ ADDITIONAL DOUBLE POWER POINTS TO THE HOME
- ✓ ADDITIONAL TELEVISION POINT/S
- ✓ TOWEL RAIL OR RING AND TOILET ROLL HOLDERS
- ✓ 6 STAR ENERGY RATING



FOR ENQUIRIES CONTACT:

Samantha Lutey m: 0405 334 465 | w: easylivingbycarlisle.com.au

Or visit: Olivine, 20 - 22 Olivine Boulevard, DONNYBROOK VIC 3064

This Display Home is Operating via Appointment only - Please Contact our Customer Inquiry Team

Redstone.
Your world awaits

*Fixed Price current as of 09/07/2020. Hebel homes may be smaller than dimensions shown on the floorplan due to the external wall thickness; see working drawings for Hebel home dimensions. Confirm land prices and availability prior to purchase. Subject to developer and council approval. Price does not include any stamp duty, government, legal or bank charges. Alterations may incur additional charges. Carlisle reserves the right to withdraw or amend pricing, inclusions and promo without notice. Bushfire (BAL) requirements will be credited back to the client if Carlisle Homes receives confirmation that the house is not being constructed in a BAL designated area. This cannot be confirmed until site survey and property information from relevant authorities is received. ^Total package price minus \$10K FHOG or \$20K FHOG for regional estates (subject to SRO eligibility). #Repayment calculated on total package price, less 20% deposit inclusive of the \$10K First Home Owner's Grant or \$20K First Home Owner's Grant for regional estates (subject to SRO eligibility), less fees, not inclusive of lender's mortgage insurance, with a variable interest rate of 3.24% p.a., comparison rate of 3.27% p.a., and 5 years of Interest-Only repayments. ^^The Only 2K deposit offer applies to new quotes and initial deposits on Carlisle's EasyLiving Series homes from 13 July 2019 and are available only in conjunction with the EasyLiving Home designs and Reference Guide. The Only 2K Deposit means customers will pay only \$2,000 as an initial deposit and will not be required to make any further payment until completion of the base stage, as defined in the HIA New Homes Building Contract. At completion of the base stage the remainder of the 5% deposit and base stage amount will be payable. ## Move in with More offer applies to new quotes and initial deposits on Carlisle's EasyLiving Series homes from 13 July 2019 and are available only in conjunction with the EasyLiving Home designs and Reference Guide. See a Sales consultant and visit carlislehomes.com.au for further details on both offers including the make and model of each inclusion. Registered Building Practitioner CDB-U50143 ©2019 Carlisle Homes Pty Ltd.