

Fixed Price \$834,034[^]

Montessa 43

Lot 235 Nira Drive | Redstone Estate, SUNBURY

Lot size: 697 sqm | House size: 43.70 sq

6 BEDS 2 BATHS 2 GARAGE

HOUSE, LAND
& LOAN PACKAGE



Where facade shown, facade may represent altered facade but on different house type, and facade colours and materials that may not be available due to land estate guidelines. Price excludes tiles, stone and/or full render to facade treatment, timber windows, landscaping, fencing, driveway, decking, planter box and decorative lights or any change required by Developer to facade. Internal images from our display home may be shown where image of facade or actual design is not available, in which case, some items pictured, such as furniture, some fixtures and fittings and structural options are not included in the fixed price and may not be available. Speak to your new home consultant for clarification.

INCLUSIONS

2570mm high ceilings	Colorbond or Tiled roof
Carpet and Timber look flooring~	Butlers pantry fit out
40mm Caesarstone benchtops throughout in a choice of 17 colours	Overhead cabinetry to Kitchen & Laundry
Timber stacker doors to Alfresco	Square set cornices to Entry and Living areas
Stainless steel 900mm SMEG appliances including 600mm dishwasher	Double glazed windows+

NEW HOME ADVANTAGE

\$30,000 to \$44,000

In upgrades, savings and existing zone discounts



\$1,000 OFF[~]

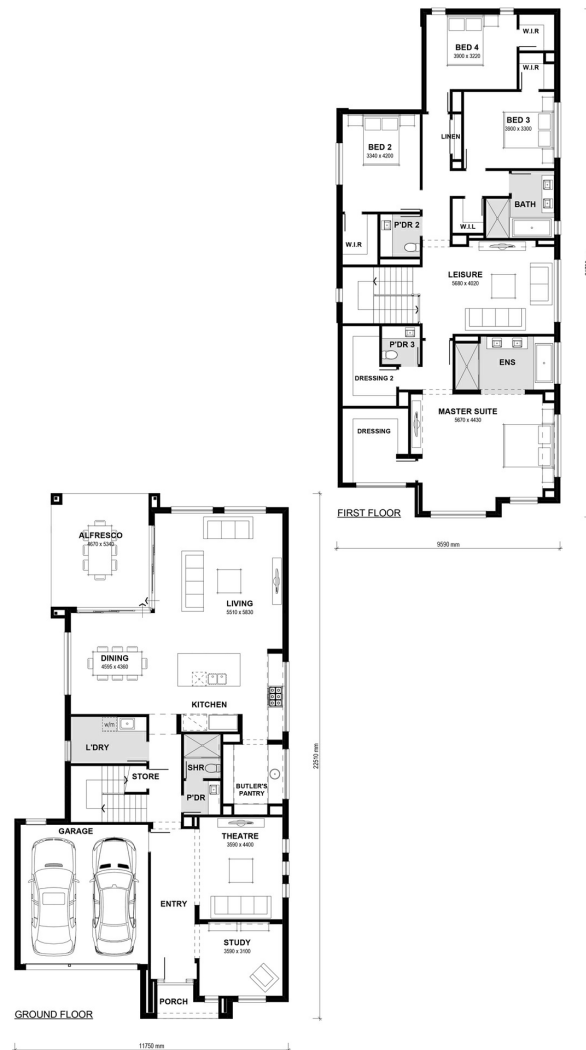
when you finance through
Waterstone Home Loans

Henley

World of Homes Wollert
Ph: 8306 6000 | henley.com.au

Montessa 43 (43.70sq)

6 BEDS 2 BATHS 2 GARAGE



World of Homes Wollert
Ph: 8306 6000 | henley.com.au

Henley

^Based on land price provided by Developer at time of print. Henley does not have authority to negotiate land sale. Land is sold separately by Developer. All land enquiries to be made direct to Developer. Home price based on a standard home, standard inclusions, Henley's preferred siting and preferred building surveyor. Home price does not include additional costs for delay in land titles, or any allowance for bushfire requirements. ^Fixed site costs do not include footing probe costs, where required or costs arising from probe results, and are offered on the proviso that Developer provides (1) level 1 compaction report for the lot that is no more than 24 months old (2) a survey of land that matches the engineering submitted to Henley with the fixed site cost application. -Flooring is Category 1 Carpet, and Category 1A Nordic Timber Laminate; +Double glazed windows excludes all doors, sidelights, butt jointed corner windows and picture windows to living areas. Allowance for Estate Guidelines# is based on items that can be identified in the Estate Guidelines at the time of fixing price and does not include discretionary items by Developer. Internal stock images may be used when actual image for design is not available. Photography and illustrations to be used as a guide. Additional cost fixtures & fittings may be shown

SD365571