



Journey INTO STYLE | 2021  
**EMBARK  
UPGRADES**

# HOME AND LAND

Images shown are for illustrative purposes only and may not represent the final product such as lighting, window furnishings, timber look garage door & timber windows. Façade details including entry door and window sizing may vary between house types. Pricing also excludes features such as fencing, landscaping, letterbox, decking, driveway and any notable features of the façade. Please speak with your sales consultant for further details.

LOT 715, REDSTONE ESTATE, SUNBURY (350M2)

**FLOOR PLAN: LITCHFIELD 19\_181**  
**FACADE: THORSBOURNE**

**FIXED PRICE**

# \$544,012

FIRST HOME OWNERS PRICE \$534,012

3 2 2 1 20sq

ADD A TOUCH OF LUXURY TO YOUR HOME TODAY & SAVE!

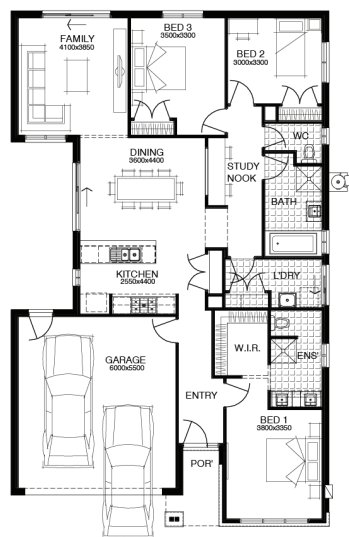


**Journey**  
INTO STYLE | 2021

SAVE ON  
LUXURY

## PACKAGE INCLUSIONS:

- ▼ DEVELOPER & COUNCIL REQS
- ▼ FLOORING THROUGHOUT
- ▼ 20MM CAESARSTONE BENCHTOP TO KITCHEN
- ▼ OVERHEAD CUPBOARDS TO KITCHEN
- ▼ 20 DOWNLIGHTS
- ▼ BRICKWORK OVER WINDOWS
- ▼ COLOURED CONCRETE DRIVEWAY UP TO 40M2
- ▼ REMOTE TO GARAGE DOOR
- ▼ NBN PROVISIONS (EXCLUDES HUB)
- ▼ TOWEL RAILS & TOILET ROLL HOLDERS



**For enquiries please contact:**  
Viola Vito

[Simonds.com.au](http://Simonds.com.au)

Metro North

VIC  
[viola.vito@simonds.com.au](mailto:viola.vito@simonds.com.au)

**Redstone.**  
Your world awaits