

Price includes standard floorplan with STANDARD facade.



Artist impression. Furniture, landscaping, driveway, window furnishing and porch decking is not provided by Urbanedge Homes.

FIRST HOME BUYERS PRICE \$557,812 ^

FIXED PRICE HOUSE & LAND

Yoki 2-20

Lot 703, Flycatcher road
LAND SIZE: 392.00m²

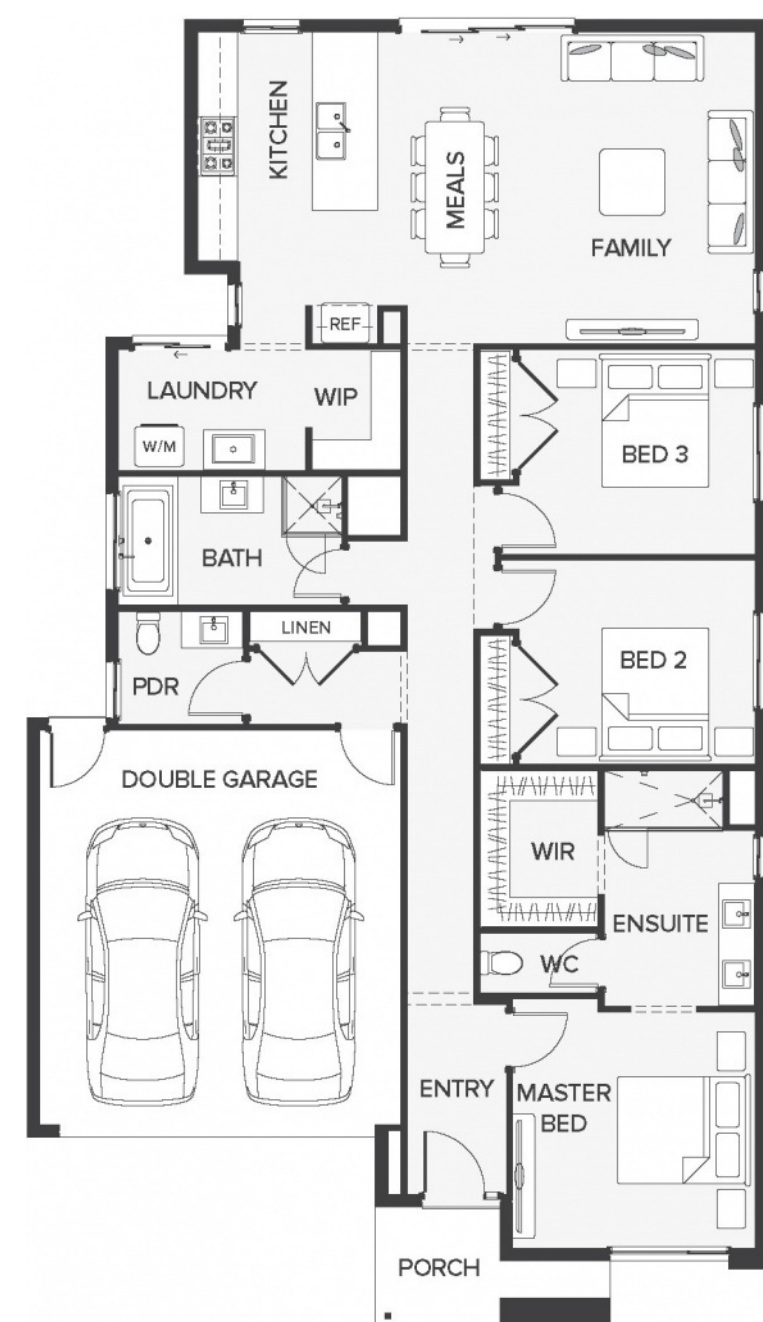
Redstone.
Your world awaits



187.37m² | 20.17 sqs

- ▲ Architecturally inspired fully rendered facade
- ▲ Brickwork or rendered foam above all ground floor windows and sliding doors
- ▲ Smeg Appliances to Kitchen
- ▲ Floor coverings throughout
- ▲ Silestone benchtops to Kitchen and Ensuite(s) Bathroom
- ▲ Base Cabinetry to Laundry
- ▲ and much more ...

edge
inclusions



Please Contact
Sujen Bhashkar
0412 357 732
sujenb@urbanedgehomes.com.au

Luxury Redefined
urbanedgehomes.com.au