



**dennis
family
homes**

a family building
homes for families™



HOUSE & LAND

\$637,783*

REDSTONE HILL – SUNBURY

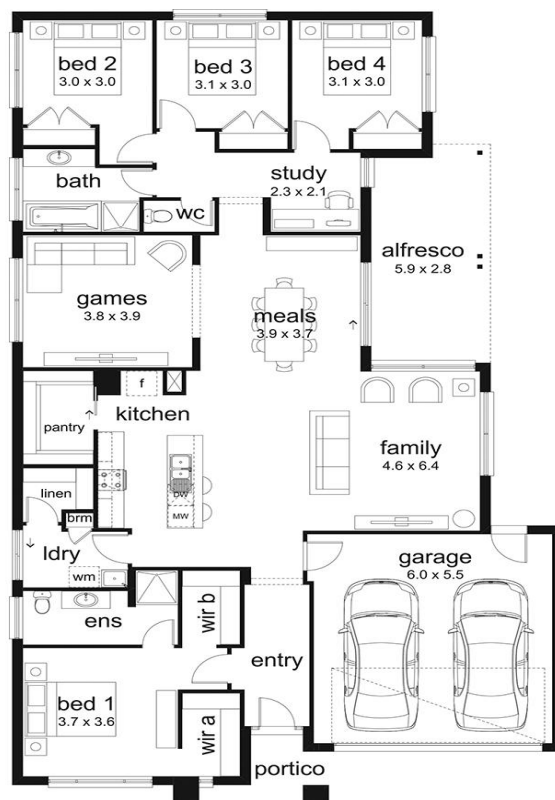
Lot 728 Sacred Drive
Sunbury VIC 3429

4 bedrooms 2 bathrooms 2 cars 2 living areas 1 study 1 alfresco

Morrison 27 Cadia Façade
(Aspirations)

Home size: 26.86sq Land size: 448.00m²

- ✓ Aspirations Inclusions
- ✓ BAL 12.5 inclusions
- ✓ Site Costs Allowance
- ✓ Water Tank
- ✓ NBN/Opticomm/Redtrain/Multinet/CNT Corp. connection
- ✓ 2580mm ceiling height to ground floor
- ✓ Double Garage
- ✓ Sectional Garage Door
- ✓ Remote control to garage door
- ✓ Flyscreens
- ✓ Stainless Steel Appliances
- ✓ Gas ducted heating
- ✓ Floor Coverings
- ✓ 35 m2 of Concrete Drive and Paving
- ✓ Current Promotion
- ✓ Feature Render
- ✓ Brick Infill to Garage



Redstone.
Your world awaits

Go to **dennisfamily.com.au** or call
1800 DENNIS for more information.

Nathan Danatzis 0447 143 191

Reference HL0039686

*Subject to land and build contracts for specified lot, available until sold. 1. Images not to scale and may differ from final built forms. 2. Landscaping, driveway, retaining walls, paving, decking, fencing, decorator items and furnishings not included. 3. Unless stated, site costs are not fixed, package price may increase depending on: rock removal and services connection costs, retaining walls, tree root mitigation, developer requirements, BAL zoning and other statutory requirements. 4. "Fixed site costs" packages include rock removal and services connection only, exclude retaining walls and tree root mitigation. 5. Price based on facade shown, excludes stamp duty, legal and transaction costs eg FIRB, finance fees. 6. Customers required to enter into a separate land contract with the land developer. 7. Prospective buyers should make and rely on their own enquiries and seek independent legal and financial advice. 8. Package not available in conjunction with any other promotions. © 2019. Dennis Family Homes Pty Ltd ACN 056254249 is a registered building practitioner CDB-U 49195 (Vic) and 173511C (NSW).