

FIXED PRICE
HOUSE & LAND

HOUSE & LAND

Redstone

\$649,000

House Name: Portsea Facade: Hamptons
 Lot Address: Lot 1028 Zoe Street
 Land size: 256m² House Size: 22sq



4



2



2

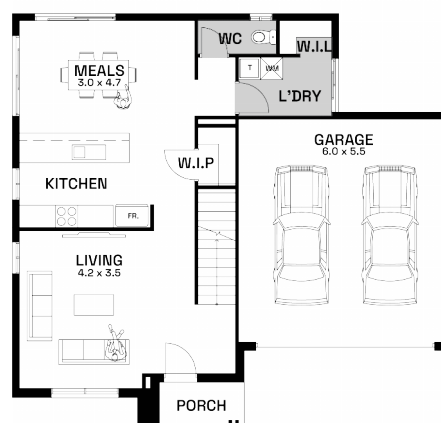
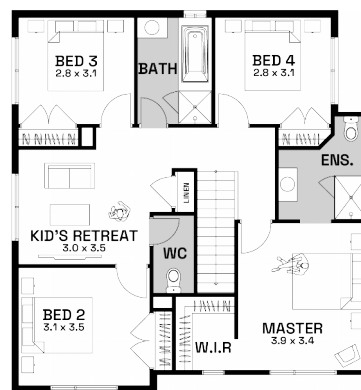
Redstone.

House and Land Package Inclusions

- 25 Year Structural Guarantee
- Fixed Site Costs including rock removal
- Developer and Council requirements
- RACV 24/7 Home Assist

Turn-Key Inclusions

- Carpets and tiles throughout
- Stainless steel appliances including dishwasher
- Blinds to all openable windows and sliding doors
- Flyscreens to all openable windows
- Coloured concrete driveway
- Natural concrete path on sides of home
- Letterbox
- Clothesline
- Full landscaping front and rear
- Kitchen Pack Promotion
- 2550mm High Ceilings to Ground Floor



The facade image provided is for illustrative purposes only. The picture illustrated may show the driveway/garage to the opposite side of the actual floor plan.

For more information, please contact Karl 0467852205