

Fixed Price \$786,036[^]

Elara 232-S25

Lot 632 Speckle Circuit | Redstone Estate, SUNBURY

Lot size: 512 sqm | House size: 24.94 sq



HOUSE &
LAND PACKAGE



INCLUSIONS

Concrete roof tiles

20mm Caesarstone
benchtops to Kitchen, Ensuite
and Bathroom in a choice of
10 colours

2570mm high ceilings to
single storeys and ground
floor of double storeys

900mm SMEG appliances

Stiebel-Eltron Hot Water Heat
Pump

Walk in Pantry

Carpet and Timber look
flooring~

Double glazed windows+

Estate guideline requirements
included

Spend It Your Way

**Up to
\$48,000
of upgrades
included**

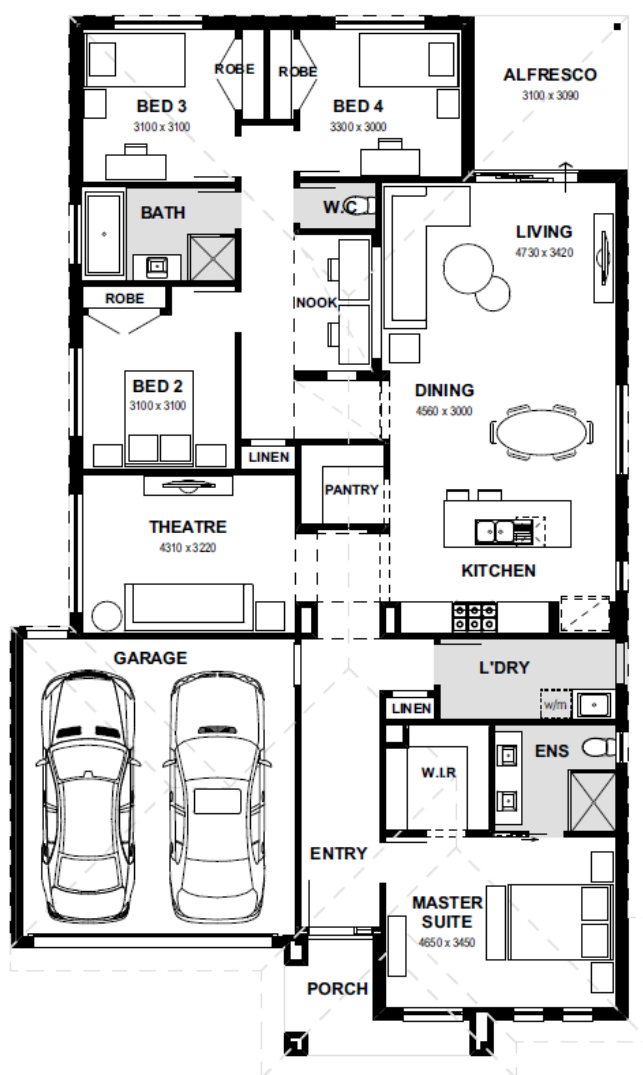
T&C's apply

Henley

Sunbury Display Centre
Ph: 03 8306 6051 | henley.com.au

Elara 232-S25 (24.94sq)

4 BEDS 2 BATHS 2 GARAGE



Sunbury Display Centre
Ph: 03 8306 6051 | henley.com.au

Henley

^^Based on land price provided by Developer as of November 2023. Henley does not have authority to negotiate land sale. Land is sold separately by Developer. All land enquiries to be made direct to Developer. Home price based on a standard home, standard inclusions, Henley's preferred siting and preferred building surveyor. Home price does not include additional costs for delay in land titles, or any allowance for bushfire requirements. ^Fixed site costs do not include footing probe costs, where required or costs arising from probe results, and are offered on the proviso that Developer provides (1) level 1 compaction report for the lot that is no more than 24 months old (2) a survey of land that matches the engineering submitted to Henley with the fixed site cost application. -Flooring is Category 1 Carpet, and Category 1A Nordic Timber Laminate; +Double glazed windows excludes all doors, sidelights, butt jointed corner windows and picture windows to living areas. Allowance for Estate Guidelines# is based on items that can be identified in the Estate Guidelines at the time of fixing price and does not include discretionary items by Developer. Internal stock images may be used when actual image for design is not available. Photography and illustrations to be used as a guide. Additional cost fixtures & fittings may be shown. House Dimensions are for base floorplan and do not take into consideration any structural options chosen. Please be aware that aspects of floorplan (including room dimensions) may change, including changes to comply with pending National Construction Code (NCC) 2022 amendments.

SD522116