

FROM \* PRICE

# House & Land Package

  
**SIMONDS**



**BUILDING  
QUALITY HOMES  
SINCE 1949**

**60K**  
**worth of inclusions**  
at no extra cost

**STRUCTURAL  
LIFETIME  
GUARANTEE**

**THIRLMERE 28\_265 | SIMONDS RANGE**

**\$766,003\***

FIRST HOME OWNERS -

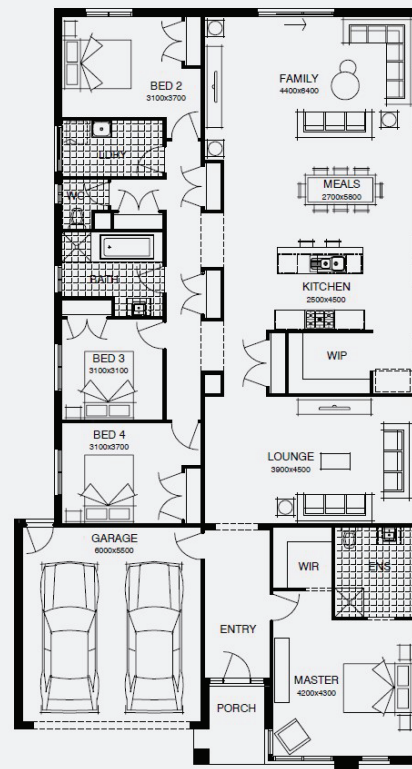
## INCLUSIONS

- + Fixed price site costs
- + Floor coverings to entire house
- + Coloured concrete driveway & path
- + Euro stainless steel cooktop & oven
- + Tiled skirting to bathrooms
- + Ducted heating
- + R2.5 insulations batts to ceiling & sisalation to walls
- + Estate covenants & so much more!

**Redstone.**

**Lot 533, Sunbury  
Redstone Estate (448m<sup>2</sup>)**

  
**4 2 2 2**



For enquiries please contact: **Chris Boucher - 0403 083 171**

**simonds.com.au**

Images shown are for illustrative purposes only and may not represent the final product such as lighting, window furnishings, timber look garage door & timber windows. Façade details including entry door and window sizing may vary between house types. Pricing also excludes features such as fencing, landscaping, letterbox, decking, driveway and any notable features of the façade. Please speak with your sales consultant for further details. All Fixed Price Home and Land packages are subject to Developer and Council approval and is based on Simonds standard floor plan with preferred siting (without alterations). Package Price does not include stamp duty, government, legal or bank charges. Community Infrastructure Levy and Asset Protection Permit are not included in pricing and is to be arranged by the client directly with the Developer (if applicable). Any alterations may incur additional charges. Confirm land price and availability prior to purchase. Simonds reserves the right to withdraw or amend pricing, inclusions and promotion at any time without notice. Please refer to the terms and conditions at [www.simonds.com.au/terms-and-conditions](http://www.simonds.com.au/terms-and-conditions). This package applies to VIC Range range only. Please speak with your sales consultant for further details. Pricing is current at 07/03/2024.

