

# Fairbrae 229

# HOUSE & LAND

Anglesea Facade

4 3 2 2

**Lot 192 Moncrieff Crescent,  
Wandana Heights 3216 (Land: 698m2)**

**\$667,138**

## Features & Inclusions

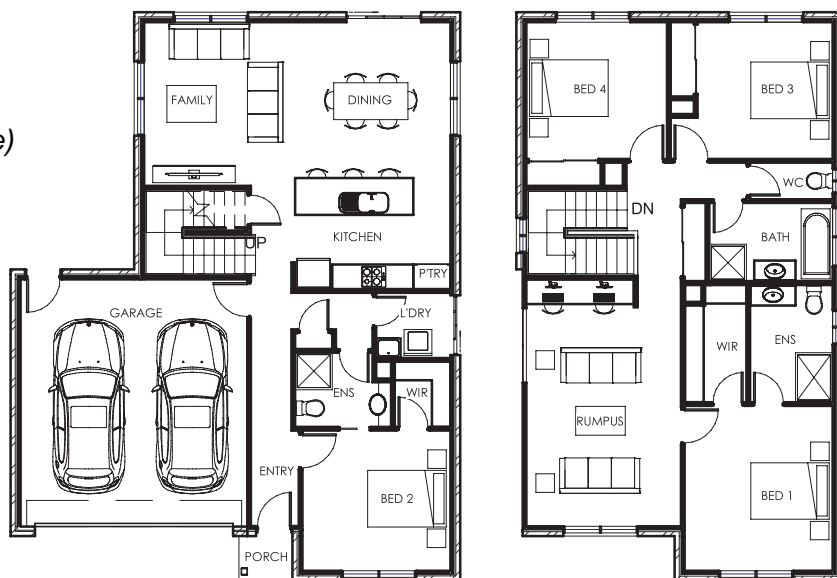
- Anglesea Facade Included
- Site Costs (*Allowance*)
- Modifications Welcome
- 900mm Stainless Steel Appliances
- Exposed Aggregate Driveway (*Allowance*)
- Local Builder & Local Trades
- Colorbond Roof
- Floor Coverings
- Heating

**Total** 229.30m<sup>2</sup> 24.70sq

**Length** 13.79m

**Width** 10.91m

**Min. Block Width** 13.00m



**HENDEN**  
HOMES

EXPERIENCE | QUALITY | INTEGRITY

M 0409 580 911 P 03 5243 0204

[www.hendenhomes.com](http://www.hendenhomes.com)



Disclaimer: Images in this brochure may depict fixtures, finishes and features not supplied by Henden Homes such as landscaping, driveways, decking, fencing, window furnishings and/or letterboxes. For detailed home pricing and home design changes, please refer to a Henden Homes Sales Representative.