

Hillgrove.

HOUSE AND LAND PACKAGE



\$586,040

**\$10K FHOG
included**

Deposit to
and receive
\$40k worth
upgrades
cost

Wellington 25

Lot 1344, Rockbank

\$586,040



4



2



2

Ridgewater Homes

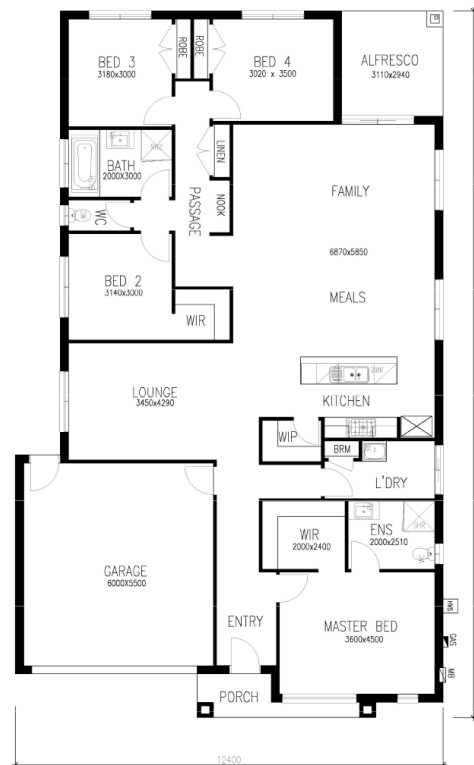
25.22sq

Inclusions List:

- 2740 High Ceiling
- 2340mm high x 1020 wide stained entry door
- Stained battens to facade (Facade specific)
- 40mm stone bench to kitchen and butler pantry
- Butler Pantry with 1500 long stone bench or
- 1000mm wide island bench with waterfall feature to both sides
- Glass splash back, bank of four pot drawers
- Soft closure cabinetry
- 900mm premium range appliances
- 600mm dishwasher
- Floor to ceiling tiles, double vanity to ensuite
- 20mm stone benches to ensuite and bathroom vanities
- 20mm stone bench to laundry
- Option of colourbond or Striata series flat tiled roof
- Choice of facade with option of raised Porch
- Timber look garage door with remote
- Stacker door to Alfresco (design specific)

1300 904 555

hillgroverockbank.com



CORE | PROJECTS

Hillgrove.

House and land sold separately. VS Fortune Pty Ltd acts as agent for the sale of the land only. Buyers will need to enter into a separate contract with the builder for the house and the builder is solely responsible for all matters relating to the building contract and the house. Prices may include rebates that are subject to the fulfilment of separate conditions under the land contract and information provided by the builder may be subject to eligibility criteria, terms and conditions as may be imposed by the builder. Buyers should review the land and building contracts carefully, make their own inquiries and obtain independent advice before proceeding. Photographs, illustrations and information are intended to be an aid and are indicative only and believed to be correct at the time of publication. VS Fortune Pty Ltd reserves the right to withdraw or alter any house and land package at any time without notice at its absolute discretion. VS Fortune Pty Ltd makes no representations and gives no warranties about the availability of builder's product at the time of enquiry and buyers should make their own inquiries with the builder directly. Estimated costs for the house and land are indicative only and other costs and fees are payable, including but not limited to: transfer/stamp duty, settlement/registration fees, legal/conveyancing fees, finance costs, site works, engagement of any consultants, approvals, connection for services and variations. VS Fortune Pty Ltd.