

## HOUSE & LAND PACKAGE

- Style and functionality
- Extensive range of luxury standard inclusions



### Bronte 191

4 2 2 14.0m



Lot: 629 Dalglish Avenue, Plumpton

Estate: Attwell

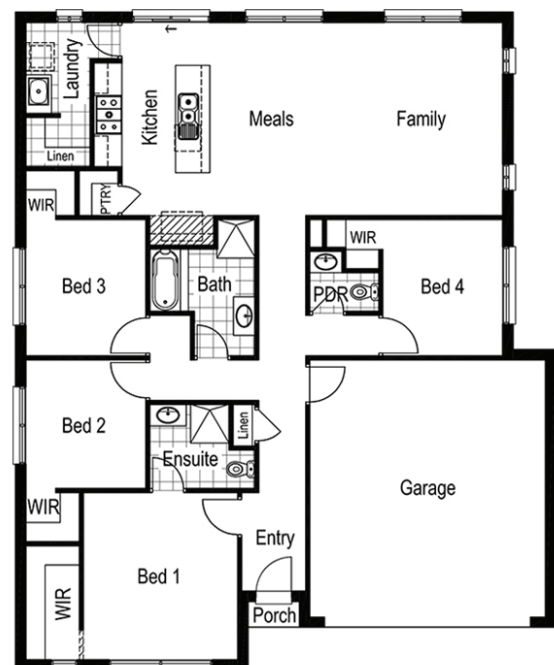
Block size: 392m<sup>2</sup>

Title Exp: October 2020

House Size: 19.17sq

#### Package Includes:

- Up to \$40,000 worth of upgrades
- Developers Guidelines
- Fixed Site Costs
- Colorbond® roof
- 900mm Stainless Steel Upright Cooker
- 900mm Stainless Steel Canopy Rangehood
- Overhead Cabinets to the Kitchen
- Soft Close hinged doors and drawers
- Ducted Heating
- 6-star energy rating on BEST orientation



[www.fairhavenhomes.com.au](http://www.fairhavenhomes.com.au)

**Benjamin Jeffrey**  
t: 040261331  
e: [bjeffrey@fairhavenhomes.com.au](mailto:bjeffrey@fairhavenhomes.com.au)

**Albright Display**  
9 Daybreak Circuit  
TRUGANINA, VIC 3029

Images are for illustration purposes only, driveway, landscaping, external lighting, furniture, window furnishings, & porch deck are not included. All pricing is based on our standard inclusions and site start within 6 months for Elegance & 12 months for Simplicity and Bridgewater from the initial deposit date. Siting of the House is at the discretion of the Builder. The Builders reserves the right to withdraw or amend prices, inclusions, & special offers without notice. House & Land sold separately, & pricing may vary due to land availability. Price does not include; not limited to: transfer duty, stamp duty, settlement costs or any other fees associated with the land settlement. It is the Purchasers responsibility to make independent enquiries into restrictions on the property in relation to MCPs, Developer Guidelines, Covenants, Building Envelopes, POS & Estate Eng. and to confirm land prices & availability before purchasing land. Fairhaven Homes acts as Builder for the sale of the Building only. \*House & Land packages excludes block specific corner treatment & acoustics requirements where applicable & are subject to Developers design panel for final approval & may need to be mirrored or altered to comply. The Purchaser may be required to upgrade façade should a similar façade be built/submitted within proximity & additional cost may apply. For full details please contact one of our New Home Consultants. Fairhaven Homes Pty Ltd. CDB-U 48497

PRICE EFFECTIVE: 22/03/2020