



## HOUSE & LAND PACKAGE

- Style and functionality
- Extensive range of luxury standard inclusions



After an affordable, quality builder?  
**Compare.**  
 The answer  
 is Fairhaven



### Ballina 250

4 2 2 14.0m



Lot: 665 Dalglish Street, Plumpton

Estate: Attwell

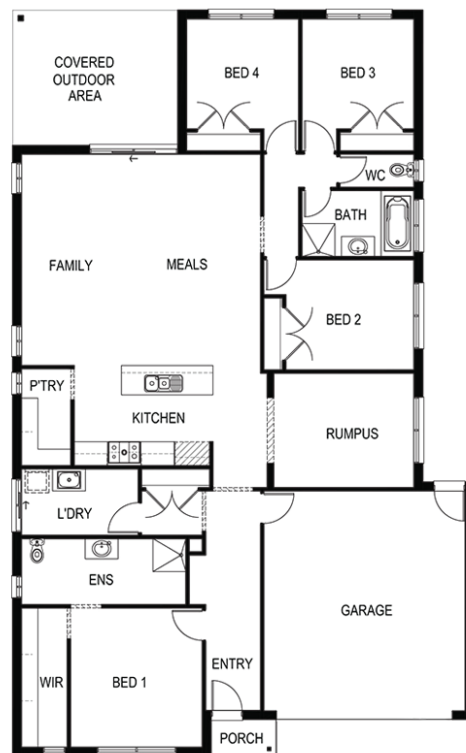
Block size: 392m<sup>2</sup>

Title Exp: December 2021

House Size: 25.07sq

#### Package Includes:

- Fixed site cost
- Developers guidelines
- Tiles or laminate timber flooring to Entry, Kitchen, Family and Meals
- Carpet to the remaining areas
- 20mm stone bench top to the kitchen
- Overhead cupboards w/Plaster bulkhead to kitchen
- Flyscreens to all openable windows
- Remote control to the garage
- Tiled shower base to the ensuite
- 2000mm high shower screen to ensuite & bathroom



[www.fairhavenhomes.com.au](http://www.fairhavenhomes.com.au)

**Benjamin Jeffrey**

t: 0402610331

e: [bjeffrey@fairhavenhomes.com.au](mailto:bjeffrey@fairhavenhomes.com.au)

**Aspire Display**

Beattys Road

Fraser Rise, VIC 3336