



HOUSE & LAND PACKAGE

- Style and functionality
- Extensive range of luxury standard inclusions



After an affordable, quality builder?
Compare.
 The answer
 is Fairhaven

Merimbula 239

4 2 2 12.5m

bridgewater RANGE BY Fairhaven

Lot: 676 Zidane Avenue, Plumpton

Estate: Attwell

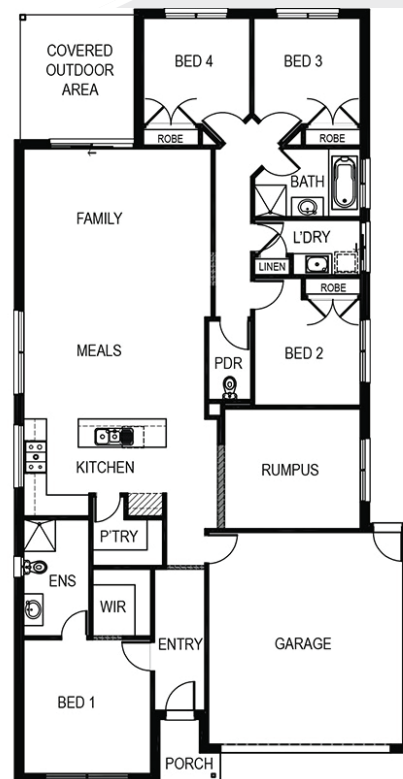
Block size: 400m²

Title Exp: December 2021

House Size: 23.97sq

Package Includes:

- Fixed site cost
- Developers guidelines
- Tiles or laminate timber flooring to Entry, Kitchen, Family and Meals
- Carpet to the remaining areas
- 20mm stone bench top to the kitchen
- Overhead cupboards w/Plaster bulkhead to kitchen
- Flyscreens to all openable windows
- Remote control to the garage
- Tiled shower base to the ensuite
- 2000mm high shower screen to ensuite & bathroom



www.fairhavenhomes.com.au

Benjamin Jeffrey
 t: 0402610331
 e: bjeffrey@fairhavenhomes.com.au

Aspire Display
 Beattys Road
 Fraser Rise, VIC 3336

Images are for illustration purposes only, driveway, landscaping, external lighting, furniture, window furnishings, & porch deck are not included. All pricing is based on our standard inclusions and site start within 6 months for Elegance & 12 months for Simplicity and Bridgewater from the initial deposit date. Siting of the House is at the discretion of the Builder. The Builders reserves the right to withdraw or amend prices, inclusions, & special offers without notice. House & Land sold separately, & pricing may vary due to land availability. Price does not include; not limited to: transfer duty, stamp duty, settlement costs or any other fees associated with the land settlement. It is the Purchasers responsibility to make independent enquiries into restrictions on the property in relation to MCPs, Developer Guidelines, Covenants, Building Envelopes, POS & Estate Eng. and to confirm land prices & availability before purchasing land. Fairhaven Homes acts as Builder for the sale of the Building only. *House & Land packages excludes block specific corner treatment & acoustics requirements where applicable & are subject to Developers design panel for final approval & may need to be mirrored or altered to comply. The Purchaser may be required to upgrade façade should a similar façade be built/submitted within proximity & additional cost may apply. For full details please contact one of our New Home Consultants. Fairhaven Homes Pty Ltd. CDB-U 48497

PRICE EFFECTIVE: 12/02/2021