



FIXED PRICE HOME AND LAND

Images shown are for illustrative purposes only and may not represent the final product such as lighting, window furnishings, timber look garage door & timber windows. Facade details including entry door and window sizing may vary between house types. Pricing also excludes features such as fencing, landscaping, letterbox, decking, driveway and any notable features of the facade. Please speak with your sales consultant for further details.

LOT 671, Attwell Estate, Deanside (379M2)

FLOOR PLAN: Chervil 21_202
FACADE: Autumn

\$599,819

FIRST HOME OWNERS PRICE \$589,819

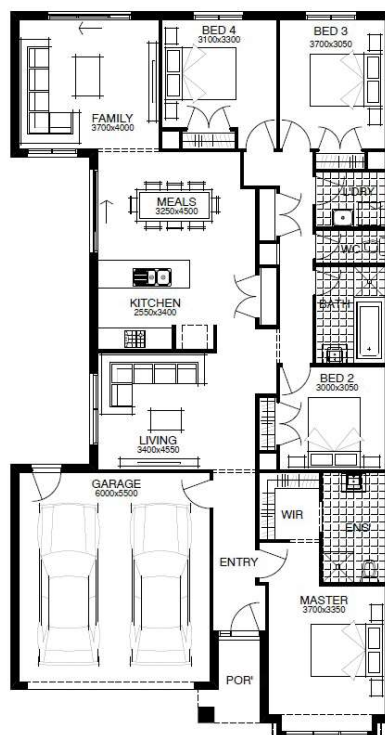
WELLNESS LIVES HERE
You should too.

*Terms & conditions apply, visit www.simonds.com.au/terms-and-conditions

PACKAGE INCLUSIONS:

- ▶ LIFETIME STRUCTURAL GUARANTEE
- ▶ DEVELOPER & COUNCIL REQs
- ▶ 450MM EAVES TO FACADE
- ▶ KEYED WINDOW LOCKS TO ALL OPENABLE WINDOWS
- ▶ 3 COAT PAINT APPLICATION
- ▶ SECTIONAL LIFT GARAGE DOOR
- ▶ TILED SHOWER BASE
- ▶ FINANCE SOLUTIONS AVAILABLE
- ▶ ... AND MUCH MORE!

4 2 2 2 21sq



For enquiries please contact:
Chris Boucher
0403 083 171
simondsxpress.com.au

VIC
Metro West
chris.boucher@simonds.com.au

ATTWELL
HOMES