



FIXED PRICE
\$707,600*

Images for illustrative purposes only & may depict upgrade options available at additional charges such as lighting, window furnishings, timber look garage door & timber windows. Pricing also excludes features not supplied by Carlisle, inc fencing, landscaping, letterbox, decking & driveway. Facade details inc entry door, window sizes & placements may vary between house types & sizes. Refer to working drawings for specific locations and sizes.

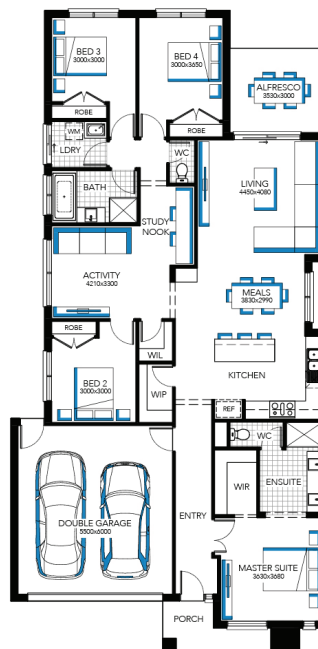
LUXE

INCLUSIONS**

- ✓ FIXED PRICE SITE COSTS AND CONNECTIONS
- ✓ DEVELOPER AND COUNCIL REQUIREMENTS
- ✓ DOUBLE GLAZING TO WINDOWS
- ✓ CERAMIC TILES OR LAMINATE TIMBER AND CARPET
- ✓ DELUXE ELECTRICAL PACK INC. LED DOWNLIGHTS
- ✓ 20MM CAESARSTONE BENCHTOPS TO KITCHEN, ENSUITE & BATHROOM
- ✓ 40MM CAESARSTONE EDGE TO ISLAND BENCHTOP WITH WATERFALL END PANELS IN DOUBLE STOREY HOMES
- ✓ LUXURIOUS SILK FINISH TO KITCHEN CUPBOARDS
- ✓ CLEAR GLASS SPLASH BACK
- ✓ FEATURE STAIRCASE BALUSTRADE
- ✓ 2110MM HIGH ALUMINIUM ENTERTAINER STACKER DOOR AND/OR ADDITIONAL ALUMINIUM SLIDING DOOR TO ALFRESCO
- ✓ ALARM SYSTEM WITH MOTION DETECTORS
- ✓ TIMBER LOOK GARAGE DOOR
- ✓ FLAT ROOF TILES

Arlington 24

Lot 737 (400m²) Attwell, PLUMPTON



FOR ENQUIRIES CONTACT:

Robert Pryzler 0408 808 698 | w: carlislehomes.com.au
Open 7 days a week 11am - 5pm
3 - 5 Best Drive DEANSIDE 3336