



# HOUSE & LAND

**\$511,100\***

## CORIDALE ESTATE – LARA

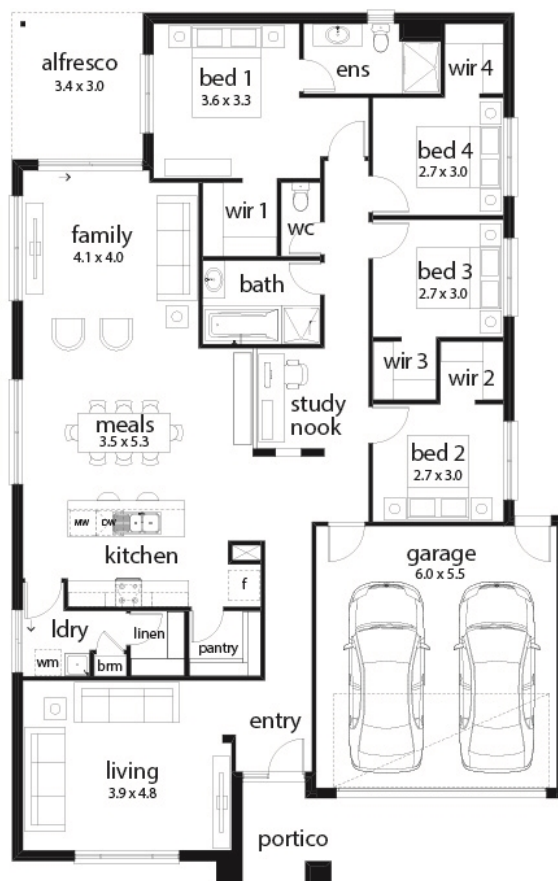
Lot 303 Lubec Street  
Lara VIC 3212

4 2 2 2 1

**Pearl 24 Sahna Façade**  
(Aspirations)

Home size: 24.42sq Land size: 392m<sup>2</sup>

- ✓ Aspirations Inclusions
- ✓ BAL
- ✓ Fixed Site Costs
- ✓ Developer/Estate Covenant Requirements
- ✓ Water Tank
- ✓ 2580mm Ceiling Height
- ✓ Double Garage
- ✓ Sectional Garage Door
- ✓ Remote control to garage door
- ✓ Flyscreens
- ✓ 900mm Appliances
- ✓ Ducted Heating
- ✓ Current Promotion
- ✓ Timber look laminate flooring to Entry/kitchen/meals/family
- ✓ Carpet to remaining areas
- ✓ Concrete paving to driveway and portico (up to 35m<sup>2</sup>)
- ✓ Designer front entry door
- ✓ Stone Benchtops to Kitchen



Go to **dennisfamily.com.au** or call  
**1800 DENNIS** for more information.

Billy Spaseski 0428 143 617  
Reference HL0032808

**Coridale**