



# HOUSE & LAND

# \$513,500\*

## CORIDALE ESTATE – LARA

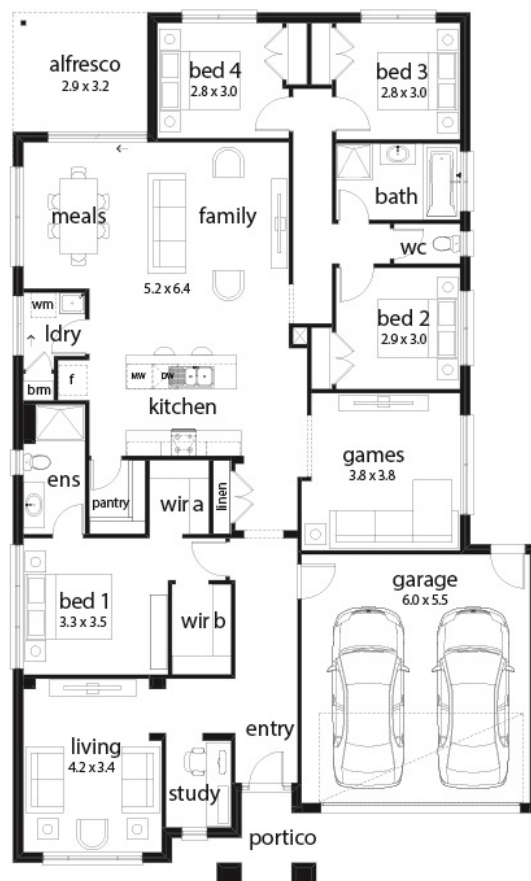
Lot 303 Lubec Street  
Lara VIC 3212

4 2 2 3 1

**Ekati 25 Mila Façade**  
(Aspirations)

Home size: 25.13sq Land size: 392m<sup>2</sup>

- ✓ Aspirations Inclusions
- ✓ BAL
- ✓ Fixed Site Costs
- ✓ Developer/Estate Covenant Requirements
- ✓ Water Tank
- ✓ 2580mm Ceiling Height
- ✓ Double Garage
- ✓ Sectional Garage Door
- ✓ Flyscreens
- ✓ 900mm Appliances
- ✓ Ducted Heating
- ✓ Current Promotion
- ✓ Timber look laminate flooring to Entry/kitchen/meals/family
- ✓ Carpet to remaining areas
- ✓ Concrete paving to driveway and portico (up to 35m<sup>2</sup>)
- ✓ Designer front entry door
- ✓ Stone Benchtops to Kitchen



Go to **dennisfamily.com.au** or call  
**1800 DENNIS** for more information.

Billy Spaseski 0428 143 617  
Reference HL0032810