



Carisbrook206

Focus

Lot 310 Lubec Street
Lara

3 2 2

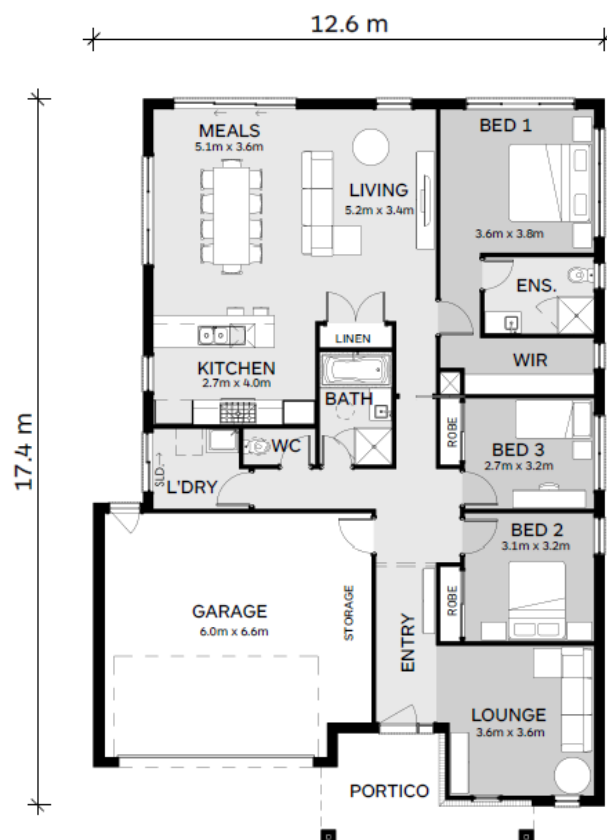
House Size:
22.2SQ
Lot Size:
392m²

Package Price:

\$545,570

It's all included

- Tesla Solar & Battery
- Double Glazed Windows
- Colorbond Steel Roof
- Site Cost Allowance
- Developer Requirements
- 2550mm Ceiling Height
- Insitu Tiled Showerbase
- Panelift Garage Door with Remotes
- SMEG 900mm Underbench Oven & Cooktop
- Stone benchtops to kitchen



HAMLAN

Contact your
new home
consultant **today**

Jess Liversidge
jessica@hamlan.com.au
0419116971

hamlan.com.au



Local Builders. Local Suppliers. Local People.

Coridale
CLUB & COUNTRY

Images are for illustrative purposes only and may not represent the final product. Prices are based on availability and price of land. Hamlan Homes reserves the right to alter any price or substitute any home without prior notice. All house and land packages are subject to developers final approval. Speak to a new home consultant for more information. www.hamlan.com.au Images are for illustrative purposes only and may not represent the final product. Prices are based on availability and price of land. Hamlan Homes reserves the right to alter any price or substitute any home without prior notice. Speak to a new home consultant for more information. www.hamlan.com.au