

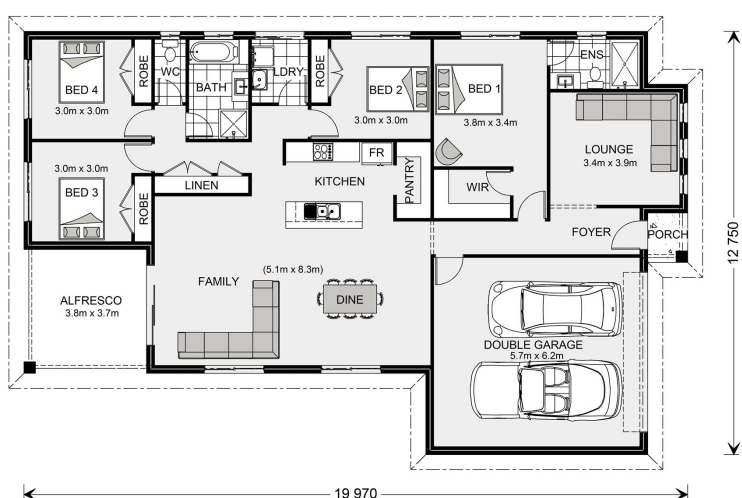


## House and land package from \$530,900\*

**Address:** 310 Lubec Street, Lara

### Inclusions:

- + Executive Facade
- + Carpet & Tiles throughout
- + Double Glazed Windows & Sliding Doors with Fly Screens
- + 900mm Westinghouse Appliances
- + 450mm Eaves & Brick Infill above windows
- + Under Roof Alfresco



\*Images and photographs may depict fixtures, finishes and features either not supplied by G.J. Gardner Homes or not included in any price stated. These items include furniture, swimming pools, pool decks, fences, landscaping - including planter boxes, retaining walls, water features, pergolas, screens and decorative landscaping items such as fencing and outdoor kitchens and barbeques. For detailed home pricing, please talk to a new homes consultant.

## Woodridge 216 - Express Series

4 2 2

**Give us a call or drop in for a chat today.**

### Office:

Geelong  
228 Moorabool St, Geelong Vic 3220  
Oakwood Plains Pty Ltd, CDB-U 54088.

**Marcus Illingworth**  
New Home Consultant  
Call: 0410 308 722  
Email: [marcus.illingworth@gjgardner.com.au](mailto:marcus.illingworth@gjgardner.com.au)

Call: 03 5221 1447  
Email: [geelong@gjgardner.com.au](mailto:geelong@gjgardner.com.au)  
Or visit [gjgardner.com.au](http://gjgardner.com.au)

Welcome **home.**

**G.J. Gardner.** HOMES