



# HOUSE & LAND

**\$572,099\***

## CORIDALE ESTATE – LARA

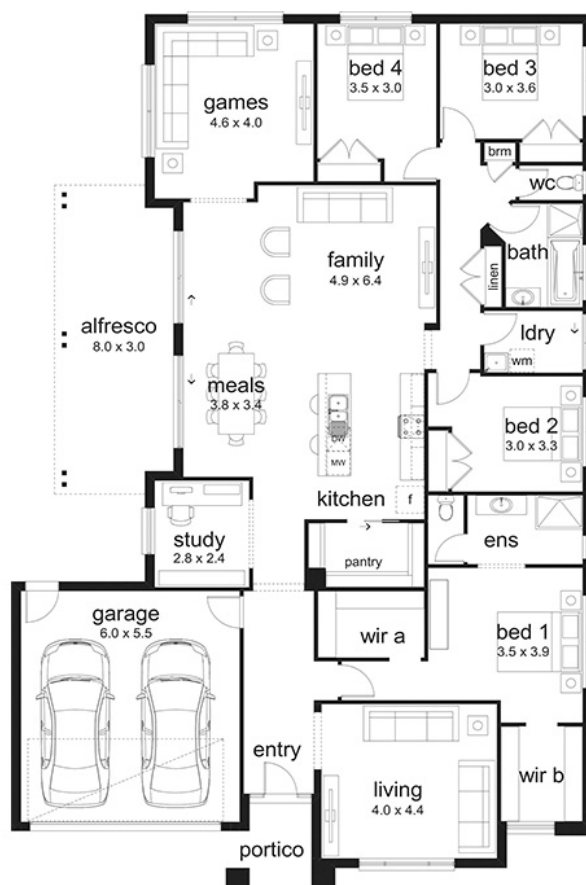
Lot 343 Brisbane Road  
Lara VIC 3217

4 2 2 3 1 1

**Cobaine 31 Como Facade**  
(Aspirations)

Home size: 31sq Land size: 512m<sup>2</sup>

- ✓ Aspirations Inclusions
- ✓ Site Costs Allowance
- ✓ Developer/Estate Covenant Requirements
- ✓ NBN Connection
- ✓ Double Garage
- ✓ Sectional Garage Door
- ✓ Remote control to garage door
- ✓ Flyscreens
- ✓ Stainless Steel Appliances
- ✓ Dishwasher
- ✓ Ducted Heating
- ✓ Floor Coverings
- ✓ 35 m2 of Concrete Drive and Paving
- ✓ Current Promotion



Go to **dennisfamily.com.au** or call  
**1800 DENNIS** for more information.

Jason Hewitt 0488 321461  
Reference HL0033810