



HOUSE & LAND

\$517,499*

CORIDALE ESTATE – LARA

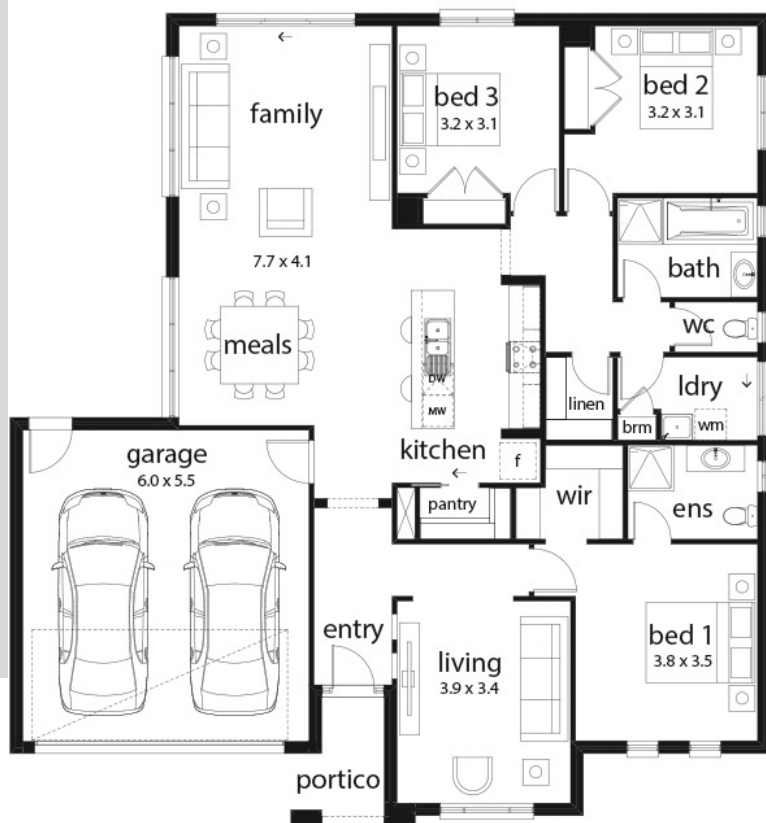
Lot 343 Brisbane Road
Lara VIC 3217

3 2 2 2

Columbia 21 Estate Facade
(Aspirations)

Home size: 20.76sq Land size: 512m²

- ✓ Aspirations Inclusions
- ✓ Site Costs Allowance
- ✓ Developer/Estate Covenant Requirements
- ✓ NBN Connection
- ✓ Double Garage
- ✓ Sectional Garage Door
- ✓ Remote control to garage door
- ✓ Flyscreens
- ✓ Stainless Steel Appliances
- ✓ Dishwasher
- ✓ Ducted Heating
- ✓ Floor Coverings
- ✓ 35 m2 of Concrete Drive and Paving
- ✓ Current Promotion



Go to **dennisfamily.com.au** or call
1800 DENNIS for more information.

Jason Hewitt 0488 321461
Reference HL0031474