

**easy**  
LIVING

**HOUSE  
+LAND**  
VIP Deals\*

**EXCLUSIVE  
PACKAGE**

fixed price

**\$670,400\***

first home owners \$660,400^

**5% Builders  
Deposit  
On us!##**

Images for illustrative purposes only & may depict upgrade options available at additional charges such as lighting, window furnishings, timber look garage door & timber windows. Pricing also excludes features not supplied by Carlisle, inc. fencing, landscaping, letterbox, decking & driveway. Facade details inc. entry door, window sizes & placements may vary between house types & sizes. Refer to working drawings for specific locations and sizes.

**why  
rent?**

first home owners  
**buy from**  
**\$329** PER WEEK\*

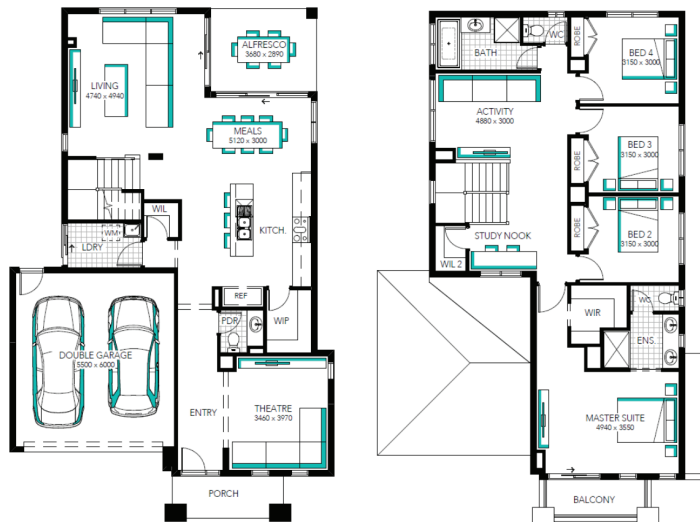
**Highview 31**

**Lot 753 (448m<sup>2</sup>) Coridale , LARA**



**EasyLiving Inclusions##:**

- ✓ FIXED PRICE SITE COSTS AND CONNECTIONS
- ✓ DEVELOPER AND COUNCIL REQUIREMENTS
- ✓ FLOORING THROUGHOUT
- ✓ 20MM CAESARSTONE BENCHTOP TO KITCHEN
- ✓ 900MM WIDE UPRIGHT COOKER AND RANGEHOOD
- ✓ LAMINATE LAUNDRY CABINETRY AND STAINLESS-STEEL TROUGH
- ✓ ADDITIONAL DOWNLIGHTS
- ✓ ADDITIONAL DOUBLE POWER POINTS TO THE HOME
- ✓ ADDITIONAL TELEVISION POINT/S
- ✓ TOWEL RAIL OR RING AND TOILET ROLL HOLDERS
- ✓ GARAGE DOOR ACCESS
- ✓ 6 STAR ENERGY RATING



**FOR ENQUIRIES CONTACT:**

Mark Sinnott 0459 928 141 | w: [easylivingbycarlisle.com.au](http://easylivingbycarlisle.com.au)

Or explore our Virtual Tours of our Display Homes from the comfort of your couch!

**Coridale**  
CLUB & COUNTRY

\*Fixed Price current as of 02/09/2021. Fixed Pricing based on developer engineering plans & plan of subdivision. Hebel homes may be smaller than dimensions shown on the floorplan due to the external wall thickness; see working drawings for Hebel home dimensions. Confirm land prices and availability prior to purchase. Subject to developer and council approval. Price does not include any stamp duty, government, legal or bank charges. Alterations may incur additional charges. Carlisle reserves the right to withdraw or amend pricing, inclusions and promo without notice. Bushfire (BAL) requirements will be credited back to the client if Carlisle Homes receives confirmation that the house is not being constructed in a BAL designated area. This cannot be confirmed until site survey and property information from relevant authorities is received. ^Total package price minus \$10K FHOG (subject to SRO eligibility). #Repayment calculated on total package price, less 20% deposit inclusive of the \$10K First Home Owner's Grant (subject to SRO eligibility), less fees, not inclusive of lender's mortgage insurance, with a variable interest rate of 3.25% p.a., comparison rate of 3.64% p.a., and 5 years of Interest-Only repayments. ##The 5% Builders Deposit Promotion applies to new quotes and initial deposits on Carlisle's EasyLiving Series homes, excluding the Carinya 16 and Chadwick 24, from 01 April 2021. In order to secure the 5% builders deposit, customer must pay their initial \$2K deposit and sign a Building Contract for the full Contract Tender within 4 weeks of the deposit. At the time of Contract signing, a variation is raised to credit the balance of the 5% deposit. The Easy Inclusions Promotion applies to new quotes and initial deposits on Carlisle's EasyLiving Series homes and is available only in conjunction with the EasyLiving Home Designs and Reference Guide. See a Sales Consultant and visit [carlislehomes.com.au/disclaimer/](http://carlislehomes.com.au/disclaimer/) for further details. Registered Building Practitioner CDB-U50143 ©2021 Carlisle Homes Pty Ltd