

Fairhaven



\$718,778

Brooklyn 278



Lot: 901 Homestead Drive, Lara

Estate: Coridale

Block Size: 508m²

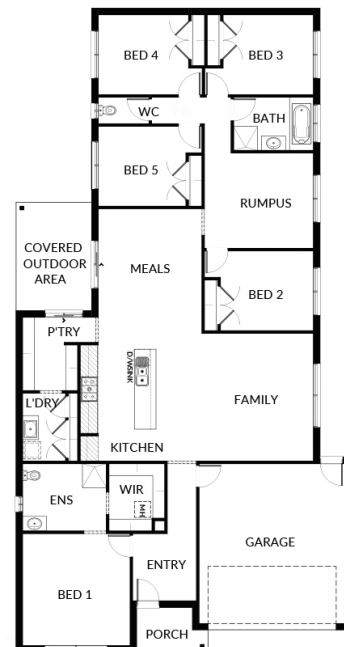
Title Exp: June 2023

House Size: 27.86sq

Package Includes:

- Developers guidelines
- Choice of facades
- Flyscreens to all openable windows
- Remote control to the garage
- Tiles or laminate timber flooring to Entry, Kitchen, Family and Meals
- Carpet to the remaining areas
- 20mm reconstituted stone benchtop to Kitchen
- 900mm kitchen appliances
- One set of three pot drawers (house specific)
- Overhead cupboards with plaster bulkhead to kitchen
- Category 2 sink mixer to kitchen
- 2000mm high shower screens throughout
- 900mm x 900mm tiled shower base (Ensuite & Bathroom)
- Category 1 shower rail to Ensuite and Bathroom

Coridale



Fairhaven Homes

E info@fairhavenhomes.com.au

M 1800 324 742

12 Wheeler Street, BERWICK 3806



fairhavenhomes.com.au

Pricing excludes. Landscaping, fencing, window and door treatments, furnishing, driveway, external lighting & window furnishing.