



Madison 27

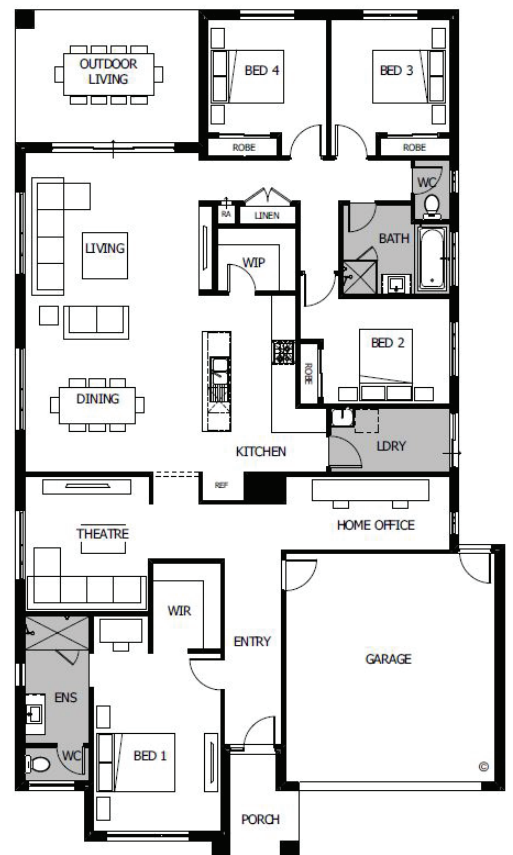
Lot 953 Native Street, Lara

Land Size: 684m²



- Stunning façade included
- Double glazing
- Westinghouse 600mm appliances
- Quality Caroma basins and tapware
- 2 coat Dulux paint to walls
- Fixed Site Costs included
- Developer & council requirements
- Double garage with camera and app control
- 25 Year Structural Guarantee
- 12 Month Maintenance
- Opticomm Connection

Fixed Price \$833,900



Call Dean Nutbean 0457 275 163
or email dnutbean@boutiquehomes.com.au
boutiquehomes.com.au

Coridale
CLUB & COUNTRY

boutique
homes

Price based on home type and floorplan shown and on builder's preferred siting. Floorplan depicts a modern facade, modern facade shown and included in price. Image used is an artist impression for illustrative purposes only and shows 2550mm high ceilings plus decorative items not included in the price shown including path, fencing, landscaping, coach lights and furnishings. 'Fixed' pricing means that, subject to the terms of this disclaimer and any owner requested changes, the price advertised will be the price contained in the building contract entered into and this price will not change other than in accordance with the building contract. The price is based on developer supplied engineering plans and plans of subdivision and final pricing may vary if actual site conditions differ to those shown in these developer supplied documents Block and building dimensions may vary from the illustration and the details shown. For more information on the pricing and specification of this home please contact a New Homes Consultant. ABN Group Victoria has permission of the owner of the land to advertise the land as part of the price specified. The price does not include transfer duty, settlement costs, community infrastructure levies imposed or any other fees or disbursements associated with the settlement of the land.