

**easy**  
LIVING

**NEW RELEASE**

fixed price

**\$670,900\***

first home owners \$660,900^

**WOW**  
INCLUSIONS##

Images for illustrative purposes only & may depict upgrade options available at additional charges such as lighting, window furnishings, timber look garage door & timber windows. Pricing also excludes features not supplied by Carlisle, inc fencing, landscaping, letterbox, decking & driveway. Facade details inc entry door, window sizes & placements may vary between house types & sizes. Refer to working drawings for specific locations and sizes.

**why  
rent?**

first home owners  
**buy from**  
**\$283** PER WEEK\*

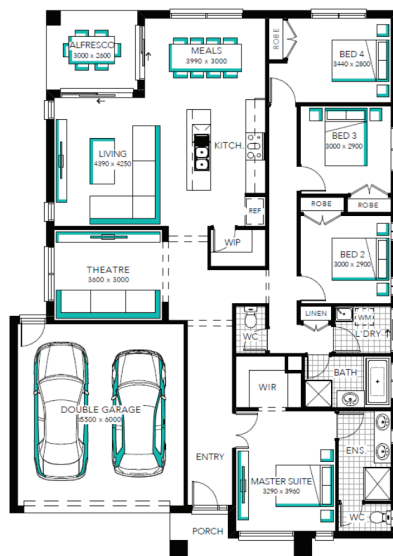
**Macquarie 22 MK2**

**Lot 1011 (392m<sup>2</sup>) Coridale , LARA**



#### WOW Inclusions##:

- ✓ FIXED PRICE SITE COSTS AND CONNECTIONS
- ✓ DEVELOPER AND COUNCIL REQUIREMENTS
- ✓ YOUR CHOICE OF FACADE AT NO CHARGE
- ✓ FLOORING THROUGHOUT
- ✓ 20MM CAESARSTONE EDGE TO ISLAND BENCHTOPS TO KITCHEN
- ✓ TECHNIKA STAINLESS STEEL DISHWASHER
- ✓ GLASS SPLASHBACK
- ✓ OVERHEAD CABINETS IN KITCHEN
- ✓ LAMINATE LAUNDRY CABINETRY AND STAINLESS-STEEL TROUGH
- ✓ 16 LED DOWNLIGHTS
- ✓ TOWEL RAIL OR RING AND TOILET ROLL HOLDERS
- ✓ 2110MM HIGH ALUMINIUM ENTERTAINER DOOR AND/OR ADDITIONAL ALUMINIUM SLIDING DOOR TO ALFRESCO
- ✓ ALARM SYSTEM
- ✓ 6 STAR ENERGY RATING



**CARLISLE**  
HOMES

#### FOR ENQUIRIES CONTACT:

Peter Stathopoulos 0427 275 995 | w: [easylivingbycarlisle.com.au](http://easylivingbycarlisle.com.au)

155 Patullos Rd LARA 3212



**Coridale**  
CLUB & COUNTRY

\*Fixed Price current as of 08/06/2022. Fixed Pricing based on developer engineering plans & plan of subdivision. Hebel homes may be smaller than dimensions shown on the floorplan due to the external wall thickness; see working drawings for Hebel home dimensions. Confirm land prices and availability prior to purchase. Subject to developer and council approval. Price does not include any stamp duty, government, legal or bank charges. Alterations may incur additional charges. Carlisle reserves the right to withdraw or amend pricing, inclusions and promo without notice. Bushfire (BAL) requirements will be credited back to the client if Carlisle Homes receives confirmation that the house is not being constructed in a BAL designated area. This cannot be confirmed until site survey and property information from relevant authorities is received. ^Total package price minus \$10K FHOG (subject to SRO eligibility). #Repayment calculated on total package price, less 20% deposit inclusive of the \$10K First Home Owner's Grant (subject to SRO eligibility), less fees, not inclusive of lender's mortgage insurance, with a variable interest rate of 2.79% p.a., comparison rate of 3.20% p.a., and 5 years of Interest-Only repayments. ##The Wow Inclusions Promotion applies to new quotes and initial deposits on Carlisle's EasyLiving homes from 11 April 2022, and is available only in conjunction with the EasyLiving Home Designs and Reference Guide. LED downlights will be located in electrical appointment. Carlisle reserves the right to withdraw or change pricing, inclusions or promotion without notice. Speak to a Sales Consultant for further details or visit [carlislehomes.com.au/disclaimer](http://carlislehomes.com.au/disclaimer). ©2022 Carlisle Homes PTY LTD. Registered Building Practitioner CBD-U 50143.