



## Steel Frames



### Lara

22 sq 4 2 2 448m<sup>2</sup>

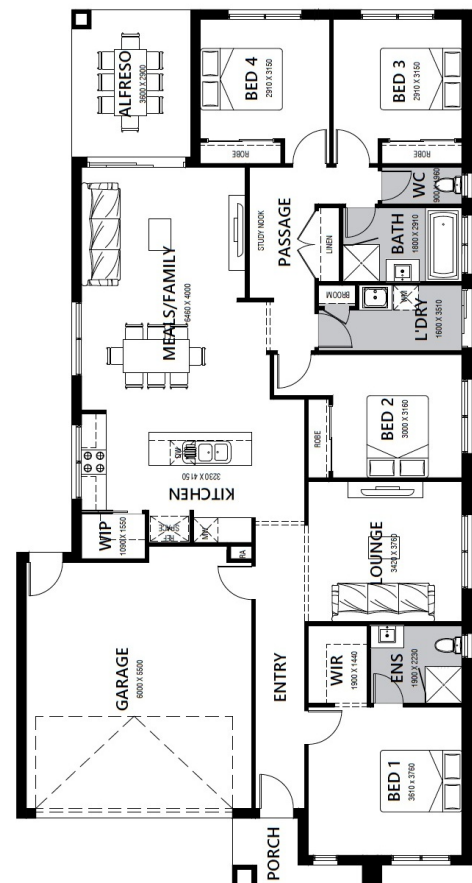
#### House & Land Package

Lot 1005 Watercourse Avenue (Coridale), Lara

**\$676,200 INC FHB-FULL TURNKEY**  
**Penfold 22sq**

#### STANDARD INCLUSIONS

- Front & rear landscaping
- Half share fencing & colour-through driveway
- Colorbond roof & Truecore steel frames
- Flooring throughout
- Higher ceilings
- Stone benchtops to kitchen & bathrooms
- LED downlights throughout
- Westinghouse appliances
- Overhead cupboards to kitchen
- Stainless Steel Dishwasher.
- Blinds throughout
- 5kW split system cooling
- Ducted heating throughout
- Zero-step tiled shower bases
- Chrome finish double towel rails and toilet roll holders
- Framed mirror or vinyl sliding doors to robes
- Brick infills over all external openings
- Remote control garage
- Window locks to all openable windows
- Flyscreens with aluminium mesh to all openable windows



## Contact - Lyle Dean

Mobile: 0417 343 541 | Email: [lyle@hlvictoria.com.au](mailto:lyle@hlvictoria.com.au)

Pricing based on developer supplied engineering & plan of subdivision. Land prices and availability prior to purchase will need to be confirmed. Community Infrastructure Levy and Asset Protection not included in pricing and to be arranged directly by client with developer, (where applicable). Subject to developer and council approval. Package price does not include any stamp duty, government, legal or bank charges. Alterations made may incur additional charges. H&L Victoria PL reserves the right to withdraw or amend pricing and inclusions without notice. Images for illustrative purposes only and may depict upgrade options available at additional charges such as lighting, window furnishings, timber look garage door and timber windows.