

SIMONDS
BUILDING HOMES SINCE 1949



ELEVATE
UPGRADES

UP TO
\$39,100*
WORTH OF INCLUSIONS
FOR JUST **\$5,000***

HOME AND LAND

Images shown are for illustrative purposes only and may not represent the final product such as lighting, window furnishings, timber look garage door & timber windows. Facade details including entry door and window sizing may vary between house types. Pricing also excludes features such as fencing, landscaping, letterbox, decking, driveway and any notable features of the facade. Please speak with your sales consultant for further details.

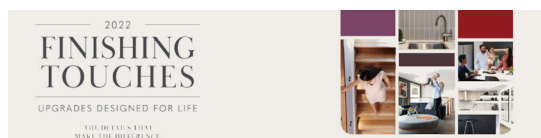
LOT 927, CORIDALE ESTATE, LARA (576M2)

FLOOR PLAN: COBERAS 26_247
FACADE: MAWSON

FIXED PRICE

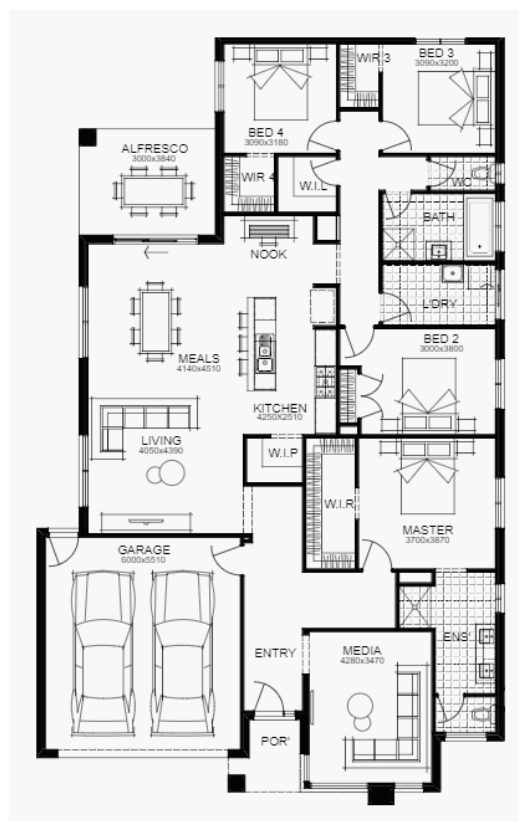
\$828,715

4 2 2 2 26sq



PACKAGE INCLUSIONS:

- ▼ DEVELOPER & COUNCIL REQ'S
- ▼ FLOORING THROUGHOUT
- ▼ 20MM CAESARSTONE BENCHTOP TO KITCHEN
- ▼ OVERHEAD CUPBOARDS TO KITCHEN
- ▼ 20 DOWNLIGHTS
- ▼ BRICKWORK OVER WINDOWS
- ▼ COLOURED CONCRETE DRIVEWAY UP TO 40M2
- ▼ REMOTE TO GARAGE DOOR
- ▼ NBN PROVISIONS (EXCLUDES HUB)
- ▼ TOWEL RAILS & TOILET ROLL HOLDERS



For enquiries please contact:

Bruno Esposti
0435219103
Simonds.com.au

Geelong

GEELONG VIC 3220
bruno.esposti@simonds.com.au



All Fixed Price Home and Land packages are subject to Developer and Council approval and is based on Simonds standard floor plan with preferred siting (without alterations). Package Price does not include stamp duty, government, legal or bank charges. Community Infrastructure Levy and Asset Protection Permit are not included in pricing and is to be arranged by the client directly with the Developer (if applicable). Any alterations may incur additional charges. Confirm land price and availability prior to purchase. Simonds reserves the right to withdraw or amend pricing, inclusions and promotion at any time without notice. Please refer to the terms and conditions at www.simonds.com.au/terms-and-conditions. This package applies to VIC Range range only. Please speak with your sales consultant for further details. Pricing is current at 16/06/2022.