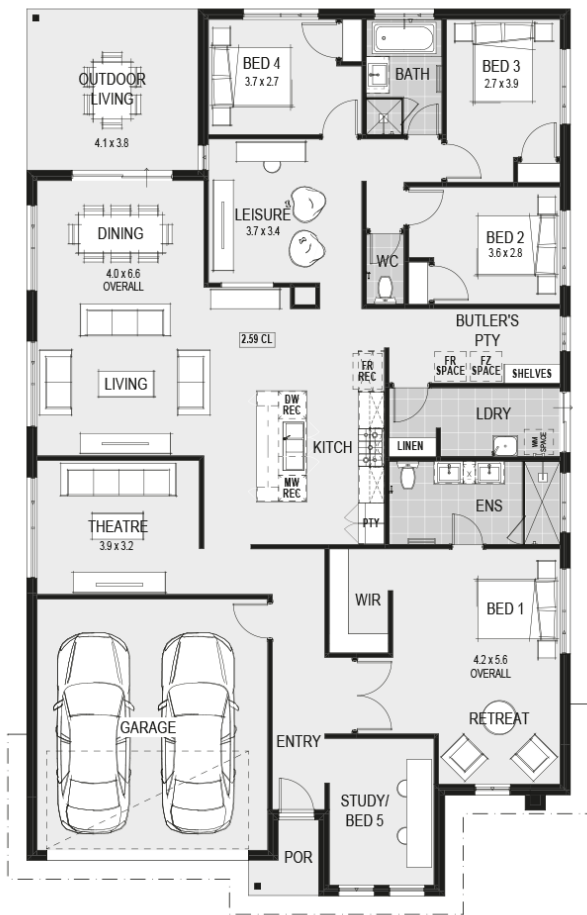




House Plan:



LOT #1042

Coridale

Address: Watercourse Avenue, Lara, 3212



576 m²

Maryland 28 - Melbourne - Classic Special

Package Price From

4 2 2 28 sq

\$807,588*

About package:

Including our \$30,000 DESIGNER KITCHEN:

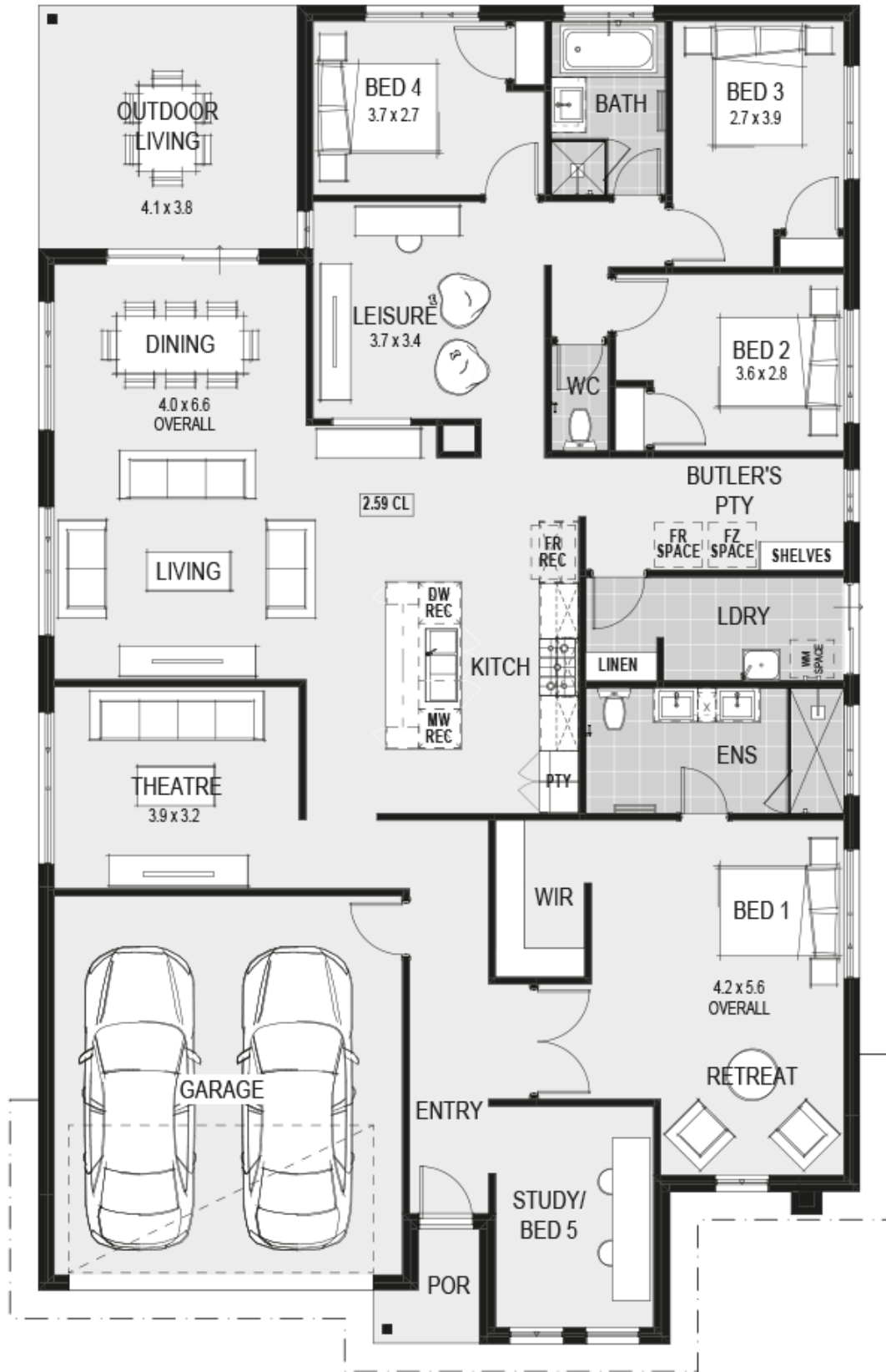
- Huge 1200mm Wide Island Bench with breakfast bar
- Stone Benchtops
- European High Gloss Cabinetry
- European High Gloss Pantry
- Lift up overhead Cupboards
- Extensive Drawers
- 900mm Freestanding Stove
- Integrated Rangehood
- Microwave recess with pot drawer
- Dishwasher recess
- Integrated cutlery drawer

PLUS MUCH MORE:

- 2590mm High Ceilings
- Laminate Flooring OR 450x450mm Main Floor Tiles
- Carpet
- LED Downlights throughout
- Internal Wall Painting
- Stone Benchtop to Ensuite, Bathroom & Laundry
- Mirrored Robe Sliding Doors
- Ducted Heating
- European Style Fixtures & Fittings throughout
- Siteworks, Council & Developer Allowance

ENQUIRE NOW:

Jarrad Hodge • P: 0418394708 • E: Jarrad.Hodge@homegroup.com.au



ENQUIRE NOW:

Jarrad Hodge • P: 0418394708 • E: Jarrad.Hodge@homegroup.com.au