

## \$790,500

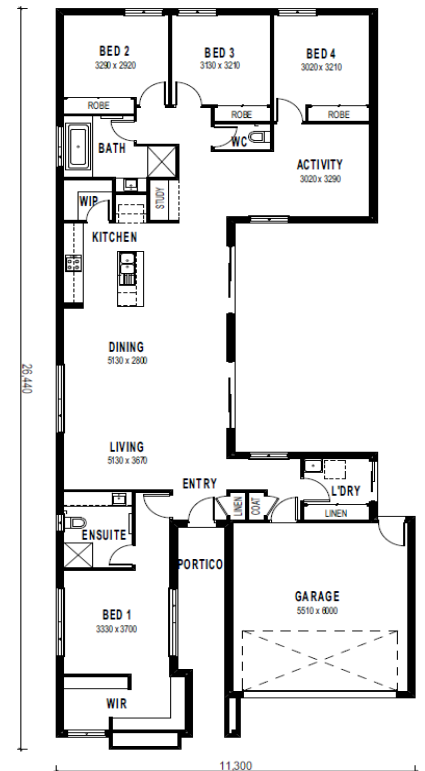
## GOVERNOR 24, Karen Facade

Lot 1016 Watercourse Avenue  
LARA, VIC 3212

Land Size: 400m<sup>2</sup>

### Inclusions:

- Enso Homes Silver Inclusions
- 25 Years Structural Warranty
- Estate Covenants, Local Gov and BAL 12.5
- Independent Quality Assurance
- 2590mm Ceiling Height
- Double Glazed Windows
- LED Downlights Throughout
- 75mm Hebel Panel Rendered Home
- Stone Benchtops Throughout
- Square Set Cornice to Entry, Living and Kitchen
- Solar PV
- Colorbond Roof



Contact: Michael Badman

M: 0438 428 103

E: michaelb@ensohomes.com.au



**DISCLAIMER:** Façade shown is INCLUDED in the advertised price. Inclusions/items listed within Enso Homes **BASE SPECIFICATION WITH SILVER COLOUR PACK** IS INCLUDED. Landscaping and associated external elements are for illustration purposes only. Prices are correct at the time of publishing but may change without notice after the date of printing. Prices do not include stamp duty, legal fees or any other cost incurred in connection with the purchase. **Developers & BAL Requirements are INCLUDED.** Unless specified as a fixed price, additional cost may be incurred due to undetermined site conditions based on the results of a site survey and soil test. House and land packages are subject to land availability which may change at any time without notice. Please note that Enso Homes House and Land package include site cost allowance only unless specify otherwise. For specific details in relation to this advertised house and land package, please refer to an Enso Homes Sales Consultant. Enso Homes Pty Ltd (ABN 34 610 177 341). Date created 17/11/2022 | Valid for 30 days.