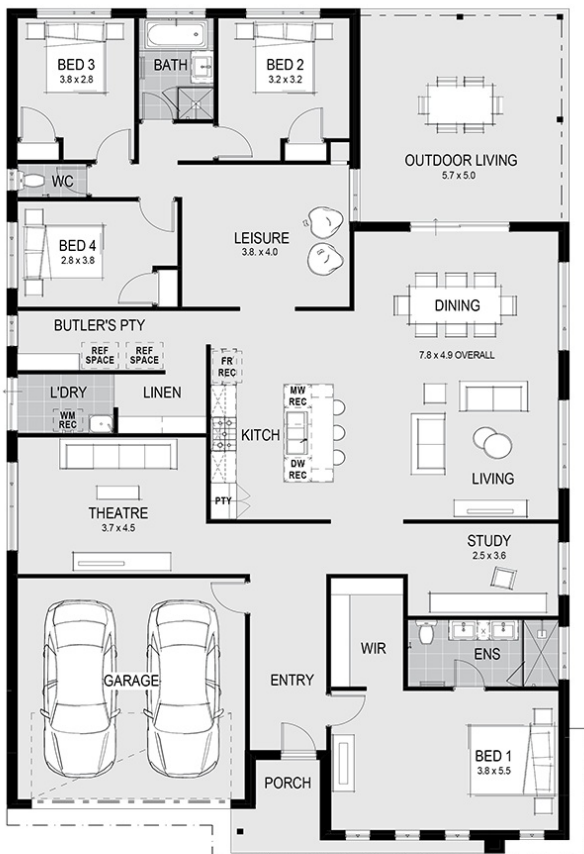




House Plan:



LOT #1042

Coridale

Address: Watercourse Avenue, Lara, 3212



576 m²

Mediterranean 32 - Melbourne - Classic Special

Package Price From

4 3 2 32 sq

\$812,999*

About package:

• All our house designs are fully customisable or bring your own design - Home Group will build it!

This packages includes our \$38,000 CONTEMPORARY KITCHEN!

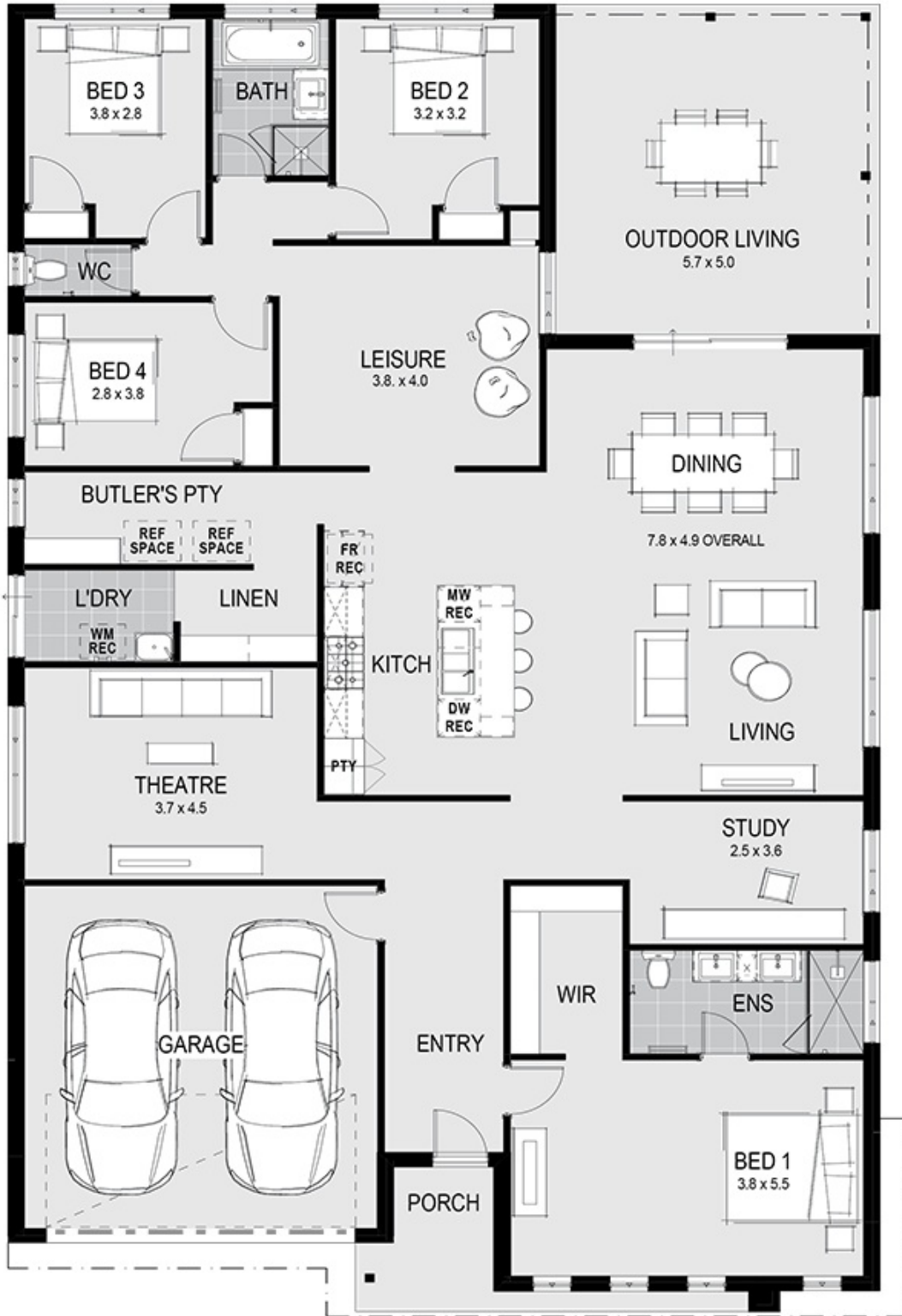
- Huge 1200mm Wide Island Bench with breakfast bar
- Stone Benchtops
- Highest Quality European High Gloss Cabinetry
- Lift up and push touch overhead Cupboards
- Extensive Pot Drawers
- Westinghouse 900mm Freestanding Stove
- Electrolux Integrated Rangehood
- Blum soft close mechanisms throughout
- Della Vita tape ware, fitting and fixtures.

Plus these Promotions Inclusions for FREE:

- Timber Laminate Flooring & Loop Pile Carpet
- 2590mm high ceilings
- Upgraded Façade*
- Double Vanity with stone top benches to ensuite*
- Double tiled Shower to ensuite*
- Luxe Rainhead Dual Combo showerhead to Ensuite
- Double Door Entry to master bedroom*
- Solid Colour through driveway
- Site Costs
- 12-18 months price hold
- Developer and Council Requirements
- and so much more!!

ENQUIRE NOW:

Jarrad Hodge • P: 0418 394 708 • E: jarrad.hodge@homegroup.com.au



ENQUIRE NOW:

Jarrad Hodge • P: 0418 394 708 • E: jarrad.hodge@homegroup.com.au